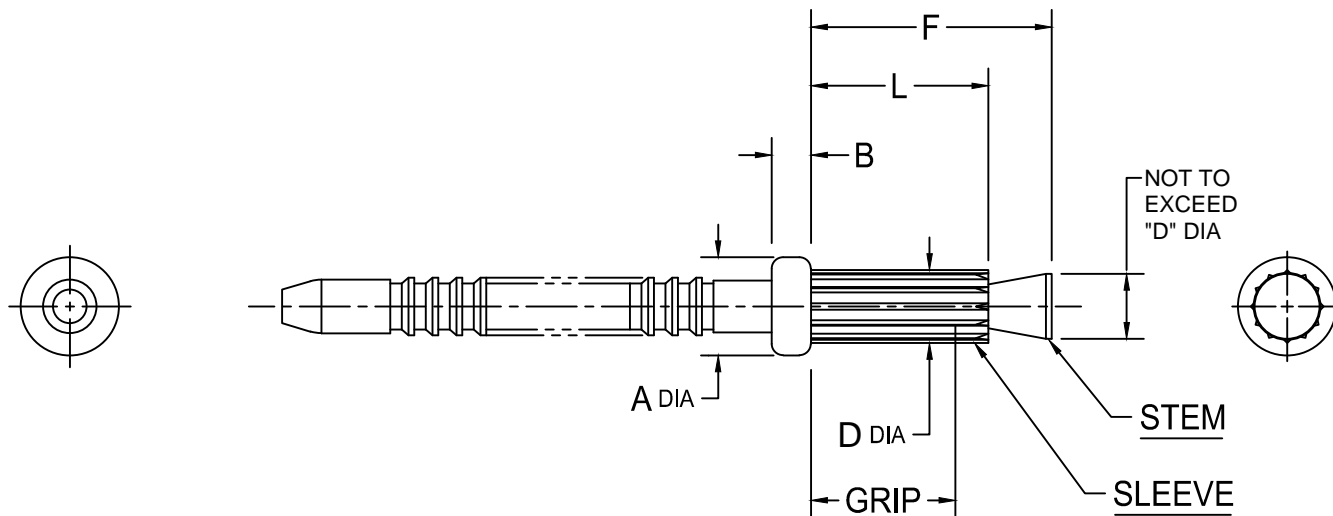




PRINTED COPIES OF THIS DOCUMENT ARE FOR "REFERENCE" ONLY. CURRENT REVISIONS ARE AVAILABLE ON-LINE.



DIA DASH NO.	A ±.005	B +.010 -.000	D 1	HOLE SIZE	
				MAX	MIN
-3	.125	.035	.097 .091	.101	.097
-4	.155	.040	.129 .122	.132	.129
-5	.187	.050	.160 .153	.164	.160
-6	.218	.065	.192 .184	.196	.192

GRIP DASH NO.	GRIP RANGE	-3 DIA		-4 DIA		-5 DIA		-6 DIA	
		F MAX	L ±.010	F MAX	L ±.010	F MAX	L ±.010	F MAX	L ±.010
-02	.063-.125	.283	.193	.312	.222	.352	.244	.377	.267
-04	.125-.250	.407	.317	.437	.347	.477	.369	.502	.392
-06	.189-.375	.532	.442	.562	.472	.601	.494	.627	.517
-08	.250-.500	.657	.568	.693	.597	.727	.619	.752	.642
-10	.312-.625	--	--	.818	.722	.852	.744	.877	.767
-12	.375-.750	--	--	--	--	.977	.869	1.002	.892
-14	.437-.875	--	--	--	--	--	--	1.127	1.017

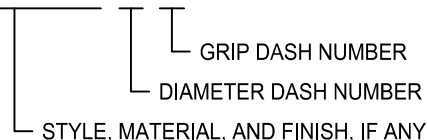
BASIC PART NUMBER	MATERIAL		FINISH	
	SLEEVE	STEM	SLEEVE	STEM 4
CCR 284 AS	5056 ALUMINUM	C-1018 STEEL	NONE	NONE
CCR 284 ASR	5056 ALUMINUM	C-1018 STEEL	RED ANODIZE PER MIL-A-8625	NONE
CCR 284 ASB	5056 ALUMINUM	C-1018 STEEL	BLACK ANODIZE PER MIL-A-8625	NONE

NOTES :

- 1 "D" DIA IS MEASURED OVER SPLINES.
- 2. NOT ALL SPLINES ARE FULLY FORMED, PROVIDED "D" DIA IS WITHIN TOLERANCE.
- 4 OIL BASED RUST PREVENTIVE APPLIED TO STEM.

3. PART NUMBER EXAMPLE :

CCR 284 ASR -3 -04



NOTICE : ALL DIMENSIONS ARE IN INCHES AND APPLY AFTER FINISH AND BEFORE LUBRICATION UNLESS OTHERWISE SPECIFIED.

WARNING : FASTENERS MAY NOT PERFORM PROPERLY IF ALTERED FROM THE MANUFACTURER'S AS-SHIPED CONDITION OR INSTALLED IN CONDITIONS OTHER THAN SPECIFIED HEREIN.

PROCUREMENT SPECIFICATION : PS-NPR-200, TYPE AS, CLASS 1	CHERRY® SPLINED TACK RIVET	SHEET 1 OF 1	PART NUMBER
NAS 523 CODE : NONE		ISSUE 06-27-01	CCR284AS
		REV. E 1-25-13	



STANDARDS PAGE REVISION LOG

REV LTR	DATE	DCR NUMBER	REVISION DESCRIPTION	COMP. BY
E	1-25-13	13-0081	ADDED PATENT INFORMATION TO STANDARDS PAGE; 6,746,192. REMOVED RUST PREVENTIVE TO STEM FINISH - REPLACED WITH NONE AND ADDED NOTE 4 NEXT TO STEM. ADDED NOTE 4; OIL BASED RUST PREVENTIVE APPLIED TO STEM.	RW