

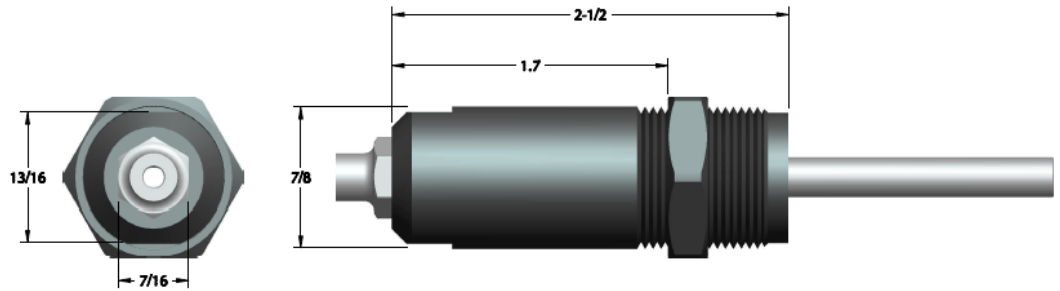
# H743 Pulling Head

## INSTRUCTION SHEET, Page 1 of 2

### DIMENSIONAL DATA (see figure on the right)

### RIVET SIZE CAPABILITY

The H743A Pulling Head is capable of installing commercial rivets with mandrel diameters from .100 to .170".



### CHOICE OF RIVETERS

The H743A Pulling Head fits directly on the G-703, G-743, G-780 and G-745 Cherry® Commercial Riveters. When used with the G-745, the pulling head must be equipped with 745A31 Ejector Tube.

### OPERATING INSTRUCTIONS

Before using this pulling head, make sure that:

- Pulling Head is correctly mounted on the proper riveter
- Proper Air source is connected (see Riveter specification for recommended pressure).
- Make sure that the proper Nosepiece is used and that it is in good working condition. Use the "Nosepiece Selection Table" as a guide.

### Nosepiece Selection Table

Pulling Head Number	Nosepiece Part No	Commercial rivet type							
		Rivet Diameter	N Rivet	Q Rivet	C-M Rivet	T Rivet	G Rivet	K-T Rivet	Mono-Bolt
H743-5C6Z	743A7-5C6Z	3/16"	ALL	ALL	--	--	--		--
H743-6K	743C53		--	--	--	--	--	ALL	--
H743-6T	703A25-6T		--	--	--	BSPT	--	--	
H743-6V	743B35		--		--	--	ALL	--	ALL
H743-8Z	743A7-8Z	1/4"	ALL	ALL	--	--	--	--	--
H743-8T	743A25-8T		--	--	--	BSPT	--	--	--
H743-8V	743B32		--	--	--	--	--	ALL	ALL
H743-8K	743C51		--	--	--	--	--	ALL	--

### OPERATING INSTRUCTIONS

Before operating the tool, make sure that:

- Pulling Head is correctly mounted on the proper riveter
- Proper Air source is connected (see Riveter manual for air pressure).
- Make sure that a proper Nosepiece, jaw and jaw follower are used; see table above for selection and fastener capability.



**CHERRY®**  
AEROSPACE

# H743

## Pulling Head

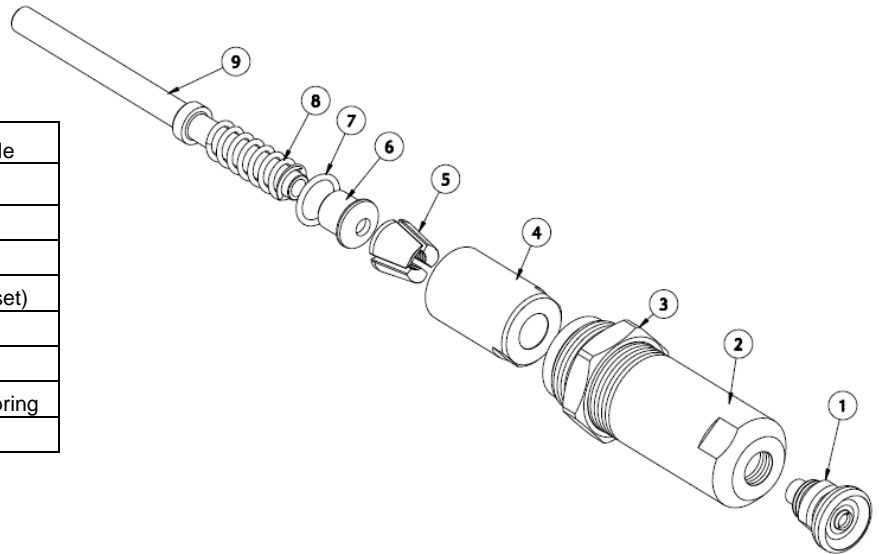
### INSTRUCTION SHEET, Page 2 of 2

#### During Operation:

- Inspect the active area of the nosepiece regularly.
- Keep the tool clean, especially the nosepiece and jaws; pay special attention when sealants and adhesives are used. If stem slippage occurs, clean or replace the jaws.

#### PARTS LIST

These parts are common to all the pulling head part numbers	1	1	See nosepiece selection table	
	2	1	743B6	Sleeve
	3	1	743A18	Jam Nut
	4	1	743A9	Collet
	5	Set	743B54	Jaws (3 pieces/set)
	6	2	743A13-8Z	Jaw Follower
	7	1	P-829	O-Ring
	8	1	732A8	Compression Spring
	9	1	743A14-8Z	Ejector Tube



#### PREVENTATIVE MAINTENANCE

- Clean and inspect the nosepiece, jaws, collet & spring every 1000 installations or whenever a failure occurs; replace spring and jaws if worn.
- Lubricate outside configuration of the jaws with Lubriplate® or similar light grease.
- Inspect regularly and keep active area clean and in good working condition.
- Replace worn or broken components.
- When re-assembling use Loctite® 242 (removable) on the threaded Nosepiece.

LOCTITE® is a registered trademark of Henkel Corporation.

LUBRIPLATE® is a registered trademark of Fiske Brothers Refining Co.

#### WARRANTY

Seller warrants the goods conform to applicable specifications and drawings and will be manufactured and inspected according to generally accepted practices of companies manufacturing industrial or aerospace fasteners. In the event of any breach of the foregoing warranty, Buyer's sole remedy shall be to return defective goods (after receiving authorization from Seller) for replacement or refund of the purchase price, at the Seller's option. Seller agrees to any freight costs in connection with the return of any defective goods, but any costs relating to removal of the defective or nonconforming goods or installation of replacement goods shall be Buyer's responsibility. SELLER'S WARRANTY DOES NOT APPLY WHEN ANY PHYSICAL OR CHEMICAL CHANGE IN THE FORM OF THE PRODUCT IS MADE BY BUYER. THE

FOREGOING EXPRESS WARRANTY AND REMEDY ARE EXCLUSIVE AND ARE IN LIEU OF ALL OTHER WARRANTIES AND REMEDIES; ANY IMPLIED WARRANTY AS TO QUALITY, FITNESS FOR PURPOSE, OR MERCHANTABILITY IS HEREBY SPECIFICALLY DISCLAIMED AND EXCLUDED BY SELLER. This warranty is void if seller is not notified in writing of any rejection of the goods within ninety (90) days after receipt of the goods by buyer.

Seller shall not be liable under any circumstances for incidental, special or consequential damages arising in whole or in part from any breach by Seller, AND SUCH INCIDENTAL, SPECIAL, OR CONSEQUENTIAL DAMAGES ARE HEREBY EXPRESSLY EXCLUDED.

Our policy is one of continuous development. Specifications shown in this document may be subject to changes introduced after publication.

NOTE: The properties, strength, dimensions, installed characteristics and all other information in these materials are for guidance only to aid in the correct selection of the products described herein and is not intended or implied as part of the above warranty. All applications should be evaluated for functional stability and available samples of the described parts can be requested for installed tests, suitability and evaluations.



**CHERRY®**  
AEROSPACE