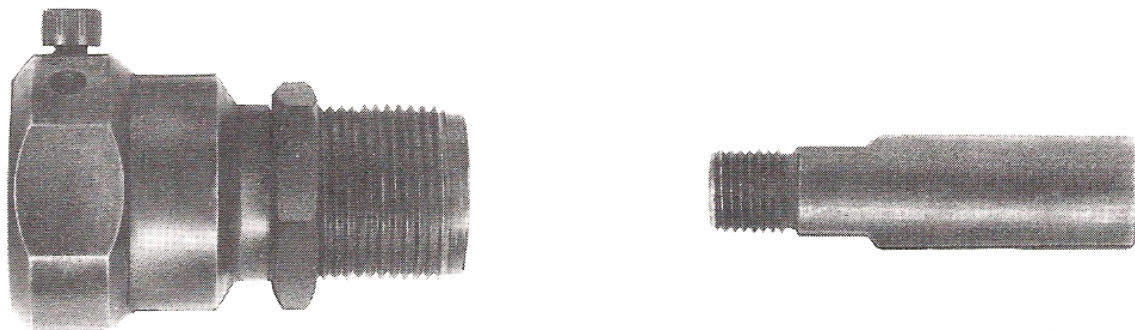


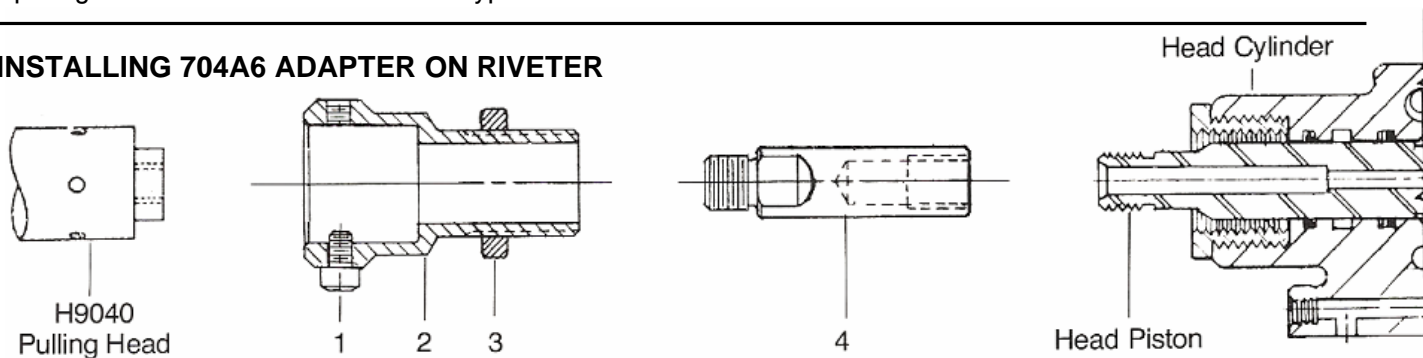
**CHERRYMAX®**  
**TOOLING ACCESSORIES**  
**INSTRUCTION SHEET**

**704A6 ADAPTER**



The 704A6 Adapter fits either the G-701, G746, G747 or G-704B CherryMAX® riveters to permit use of H9040 pulling heads for the installation of MS-type blind rivets.

**INSTALLING 704A6 ADAPTER ON RIVETER**



1. Engage internal threads of drawbolt adapter (4) with external threads of head piston. Rotate drawbolt adapter (4) clockwise until it bottoms out on shoulder of piston and tighten with appropriate wrench.
2. Engage external threads of sleeve adapter (2) with internal threads of head cylinder. Rotate sleeve adapter (2) clockwise until hand tight. Tighten jam-nut (3) snugly against head cylinder using appropriate wrench.
3. Engage internal threads of pulling head drawbolt with external threads of drawbolt adapter (4). Rotate pulling head clockwise until it bottoms out on shoulder of drawbolt adapter (4).
4. Slide outer sleeve of pulling head into sleeve adapter (2) and align holes to accept cap screw (1). Tighten screw snugly.

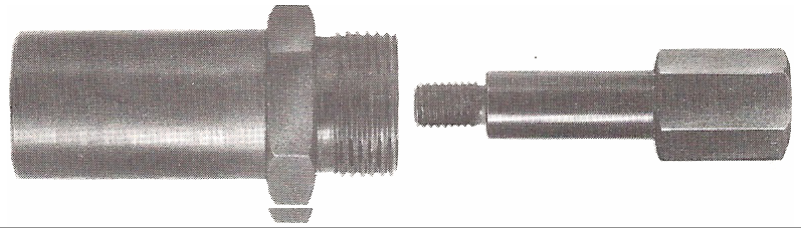
REF. NO.	PART NUMBER	DESCRIPTION	QTY. REQ.	MAINTENANCE AND REPAIR
1	P-258	Cap Screw	1	Keep adapter clean, especially inner section of sleeve adapter, as chips and sealants can hamper internal operation.
2	704B8	Sleeve Adapter	1	
3	671A16	Jam Nut	1	
4	704A7	Drawbolt Adapter	1	



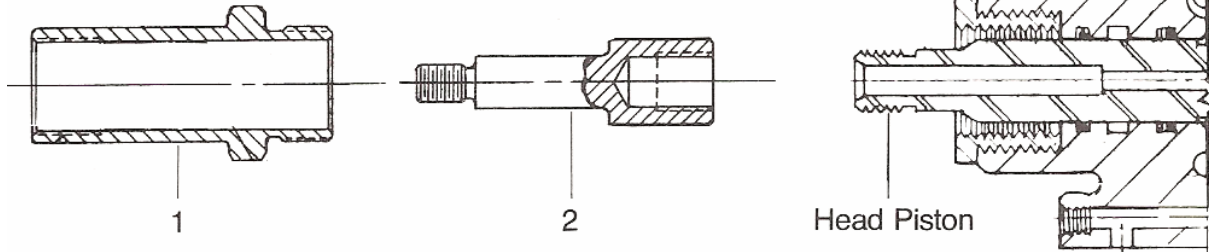
**CHERRY®**  
**AEROSPACE**

## 704A9 ADAPTER

The 704A9 Adapter fits G-701, G747, G746A and G-704B CherryMAX® riveters to permit use of H9015 pulling heads for the installation of MS-Type blind rivets.



### INSTALLING 704A9 ADAPTER ON RIVETER



2. Engage internal threads of drawbolt adapter (2) with external threads of head piston. Rotate drawbolt adapter (2) clockwise until it bottoms out on shoulder of piston and tighten with appropriate wrench.
  3. Engage external threads of sleeve adapter (1) with internal threads of head cylinder. Rotate sleeve adapter (1) clockwise until snug against head cylinder and tighten with appropriate wrench.
3. Engage external threads of pulling head with internal threads of sleeve adapter (1). Rotate pulling head clockwise until it is hand tight. Drawbolt of pulling head will simultaneously engage with drawbolt adapter (2) on head piston. Tighten pulling head jam-nut snugly against sleeve adapter (1) using appropriate wrench.

REF. NO.	PART NUMBER	DESCRIPTION	QTY. REQ.	MAINTENANCE AND REPAIR
1	704A11	Sleeve Adapter	1	Keep adapter clean, especially inner section of sleeve adapter, as chips and sealants can hamper tool operation.
2	704A10	Drawbolt Adapter	1	

### WARRANTY

Seller warrants the goods conform to applicable specifications and drawings and will be manufactured and inspected according to generally accepted practices of companies manufacturing industrial or aerospace fasteners. In the event of any breach of the foregoing warranty, Buyer's sole remedy shall be to return defective goods (after receiving authorization from Seller) for replacement or refund of the purchase price, at the Seller's option. Seller agrees to any freight costs in connection with the return of any defective goods, but any costs relating to removal of the defective or nonconforming goods or installation of replacement goods shall be Buyer's responsibility. SELLER'S WARRANTY DOES NOT APPLY WHEN ANY PHYSICAL OR CHEMICAL CHANGE IN THE FORM OF THE PRODUCT IS MADE BY BUYER. THE FOREGOING EXPRESS WARRANTY AND REMEDY ARE EXCLUSIVE AND ARE IN LIEU OF ALL OTHER WARRANTIES AND REMEDIES; ANY IMPLIED WARRANTY AS TO QUALITY, FITNESS FOR PURPOSE, OR MERCHANTABILITY IS HEREBY SPECIFICALLY DISCLAIMED AND EXCLUDED BY SELLER. This warranty is void if seller is not notified in writing of any rejection of the goods within ninety (90) days after receipt of the goods by buyer.

Seller shall not be liable under any circumstances for incidental, special or consequential damages arising in whole or in part from any breach by Seller, AND SUCH INCIDENTAL, SPECIAL, OR CONSEQUENTIAL DAMAGES ARE HEREBY EXPRESSLY EXCLUDED.

Our policy is one of continuous development. Specifications shown in this document may be subject to changes introduced after publication.

NOTE: The properties, strength, dimensions, installed characteristics and all other information in these materials are for guidance only to aid in the correct selection of the products described herein and is not intended or implied as part of the above warranty. All applications should be evaluated for functional stability and available samples of the described parts can be requested for installed tests, suitability and evaluations.

For more information please contact our Technical Services Department at tel. 714-850-6022



**CHERRY**®  
**AEROSPACE**

TS-704A6 Rev: A Date: 02/05/07 CR: 07-0097

1224 East Warner Ave,  
Santa Ana, CA 92705  
Tel: 1-714-545-5511  
www.cherryaerospace.com