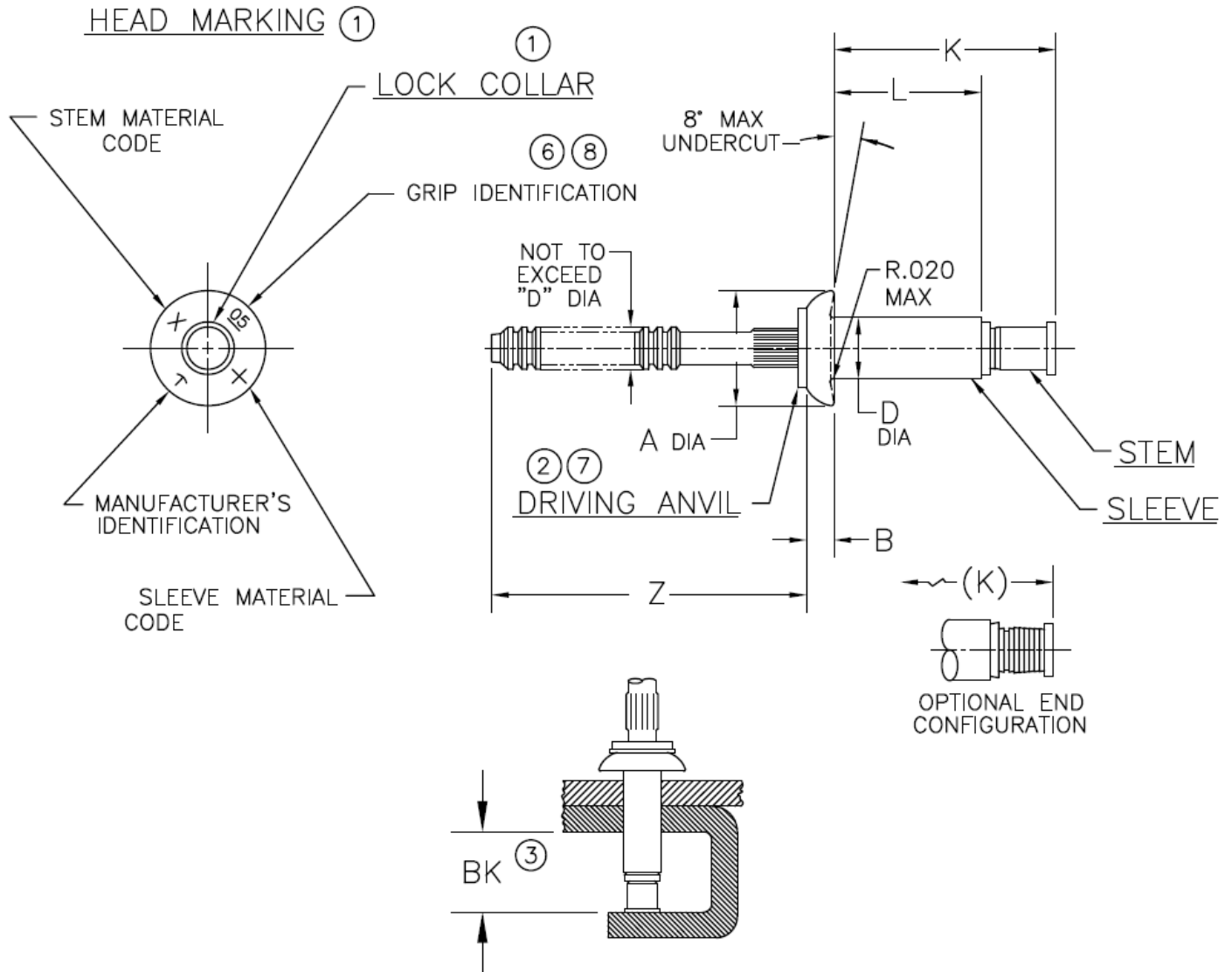




PRINTED COPIES OF THIS DOCUMENT ARE FOR "REFERENCE" ONLY. CURRENT REVISIONS ARE AVAILABLE ONLINE.



DIA. DASH NO.	A ± .010	B +.010 -.000	D +.003 -.001	Z REF	BK ③ MIN	HOLE LIMITS	
						MIN	MAX
-4	.250	.054	.140	.87	.390	.143	.146
-5	.312	.067	.173	.94	.395	.176	.180
-6	.375	.080	.201	.94	.410	.205	.209
-8	.500	.107	.267	.96	.490	.271	.275

SEE SHEET 2 FOR LENGTH DIMENSIONS, MATERIALS AND FINISHES

SEE SHEET 3 FOR NOTES AND PART NUMBER EXAMPLE

NOTICE: ALL DIMENSIONS ARE IN INCHES AND APPLY AFTER FINISH AND BEFORE LUBRICATION UNLESS OTHERWISE SPECIFIED.

WARNING: FASTENERS MAY NOT PERFORM PROPERLY IF ALTERED FROM THE MANUFACTURER'S AS-SHIPPED CONDITION OR INSTALLED IN CONDITIONS OTHER THAN SPECIFIED HEREIN.

PROCUREMENT SPECIFICATION:  PS-CMR-3000	CHERRYMAX® RIVET OVERSIZE DIAMETER UNIVERSAL HEAD		SHEET 1 OF 3		PART NUMBER  <b>CR3853</b>
			ISSUE	03-07-86	
			REV.	U 29 JAN 19	
NAS 523 CODE: NONE					



GRIP DASH NO.	GRIP LIMITS		-4 DIA		-5 DIA		-6 DIA		-8 DIA	
			L	K	L	K	L	K	L	K
	MIN	MAX	+0.000 -.030	MAX	+0.000 -.030	MAX	+0.000 -.030	MAX	+0.000 -.030	MAX
-01	④	.062	.175	.37	.203	.43	.242	.45	---	---
-02	.063	.125	.238	.46	.246	.47	.265	.50	.313	.57
-03	.126	.187	.301	.52	.309	.53	.328	.55	.375	.64
-04	.188	.250	.363	.58	.371	.60	.390	.62	.437	.70
-05	.251	.312	.426	.65	.434	.66	.453	.68	.500	.77
-06	.313	.375	.488	.71	.496	.72	.515	.74	.562	.83
-07	.376	.437	.551	.78	.559	.79	.578	.82	.625	.89
-08	.438	.500	.613	.84	.621	.85	.640	.89	.687	.95
-09	.501	.562	.676	.90	.684	.91	.703	.95	.750	1.02
-10	.563	.625	---	---	.746	.98	.765	1.01	.812	1.08
-11	.626	.687	---	---	.809	1.04	.828	1.07	.875	1.14
-12	.688	.750	---	---	---	---	.890	1.14	.937	1.20

FINISH CODE	MATERIAL ⑤			FINISH		
	SLEEVE	STEM	LOCK COLLAR	SLEEVE	STEM	LOCK COLLAR
----	INCONEL 600 PER AMS 5687	INCONEL X-750 PER AMS 5698	A-286 CRES PER AMS 5731	NONE	NONE	PASSIVATE PER AMS 2700
⑦ DL	INCONEL 600 PER AMS 5687	INCONEL X-750 PER AMS 5698	A-286 CRES PER AMS 5731	NONE	DICRONITE DL-5 OR NONE	PASSIVATE PER AMS 2700
⑨ PR	INCONEL 600 PER AMS 5687	INCONEL X-750 PER AMS 5698	A-286 CRES PER AMS 5731	NONE	NONE	PASSIVATE PER AMS 2700

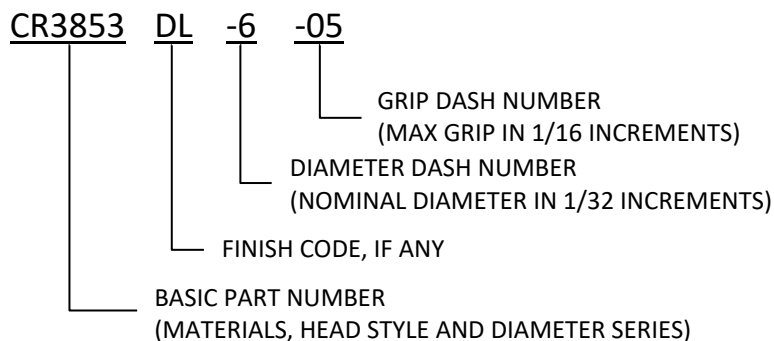
SHEET 2 OF 3			PART NUMBER	
ISSUE	03-07-86		CR3853	
REV.	U	29 JAN 19		



## NOTES:

- ① HEAD MARKINGS AND LOCK COLLAR VISIBLE AFTER INSTALLATION.
- ② SILVER COLORED DRIVING ANVIL IDENTIFIES OVERSIZE DIAMETER RIVETS.
- ③ MINIMUM BLIND SIDE CLEARANCE FOR SATISFACTORY INSTALLATION. INSPECTION OF THIS FEATURE IS NOT PERFORMED BY THE MANUFACTURER.
- ④ MINIMUM GRIP FOR -4 DIA. IS .025; FOR -5 IS .031; AND FOR -6 IS .037.
- ⑤ MATERIAL DESIGNATION REFERS TO CHEMICAL COMPOSITION ONLY.
- ⑥ SINGLE DIGIT HEAD MARKING IS PERMISSIBLE, AT MANUFACTURER'S OPTION, FOR GRIP DASH NUMBERS LESS THAN 10.
- ⑦ "DL" FINISH CODE PARTS HAVE NICKEL PLATED DRIVING ANVILS. LUBRICANTS OTHER THAN DICRONITE DL-5 MAY NOT BE USED. "DL" FINISH MEETS SPECIFICATION DOD-L-85645.
- ⑧ A DASH MAY BE MARKED UNDER OR TO THE RIGHT SIDE OF THE GRIP IDENTIFICATION AT MANUFACTURER'S OPTION.
- ⑨ "PR" CODE - PARTS ARE MANUFACTURED BARE; IF LUBE IS REQUIRED, USE PAR 90 ONLY. IN ADDITION, MANUFACTURER'S OPTION TO APPLY MOLYBDENUM DISULFIDE TYPE 1 PER AS 5272, TO STEM ONLY.

## PART NUMBER EXAMPLE:



SHEET 3 OF 3		PART NUMBER
ISSUE	03-07-86	CR3853
REV.	U 29 JAN 19	

## STANDARDS PAGE REVISION LOG

REV LTR	DATE	DCR NUMBER	REVISION DESCRIPTION	COMP. BY
U	29 JAN 19	19-0052	<ul style="list-style-type: none"><li>• REWRITTEN IN MS WORD</li><li>• SHEET 1 – ADDED NOTE ③ TO <b>BK MIN</b></li><li>• SHEET 2 – ADDITIONAL COMMENTS ADDED TO NOTE ③</li></ul>	AA