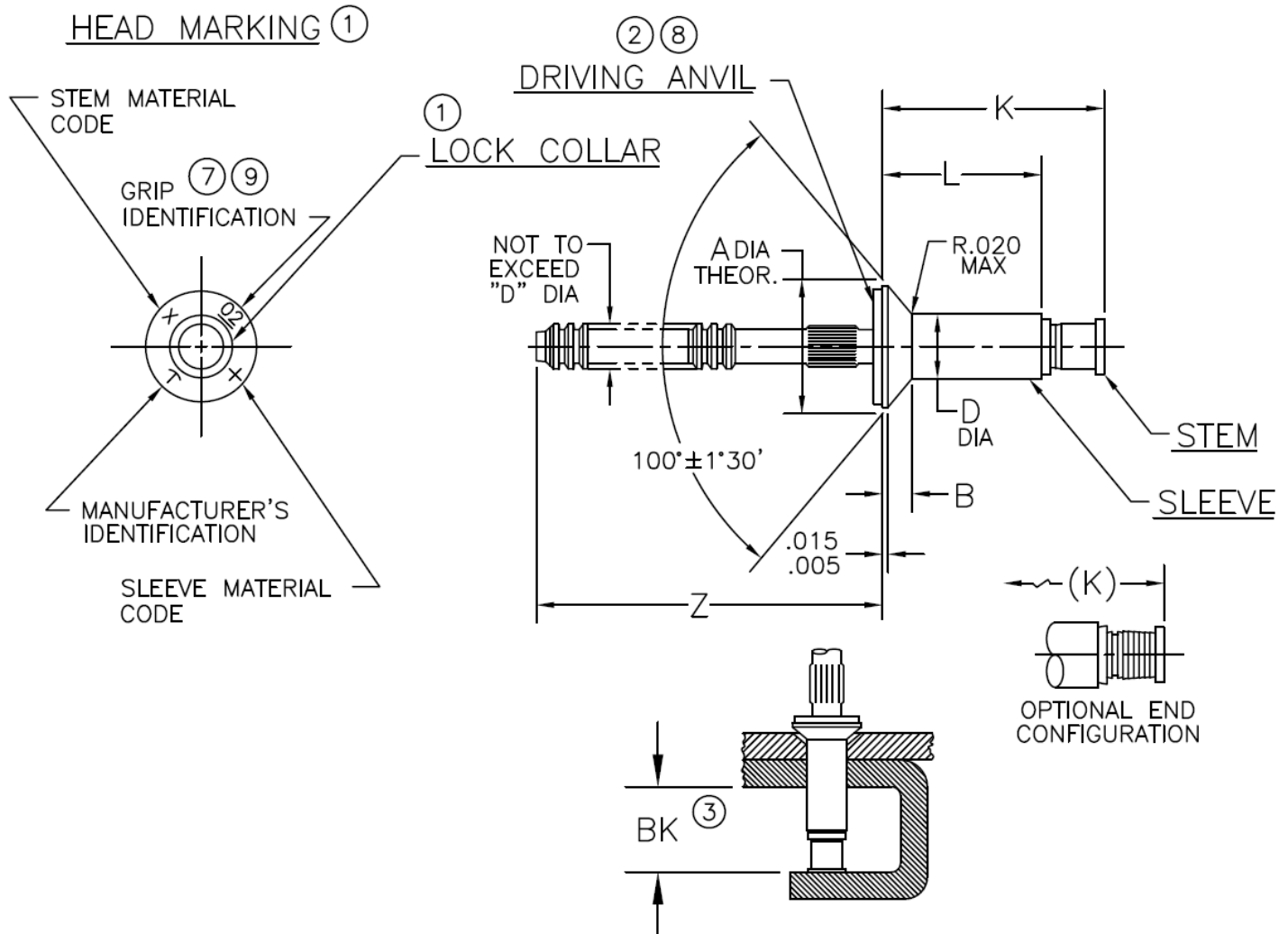




PRINTED COPIES OF THIS DOCUMENT ARE FOR "REFERENCE" ONLY. CURRENT REVISIONS ARE AVAILABLE ONLINE.



DIA. DASH NO.	A ±.004	B REF	D +.003 -.001	Z REF	BK ^③ MIN	HOLE LIMITS	
						MIN	MAX
-4	.225	.035	.140	.87	.390	.143	.146
-5	.286	.047	.173	.94	.395	.176	.180
-6	.353	.063	.201	.94	.410	.205	.209
-8	.476	.086	.267	.96	.490	.271	.275

SEE SHEET 2 FOR LENGTH DIMENSIONS, MATERIALS AND FINISHES

SEE SHEET 3 FOR NOTES AND PART NUMBER EXAMPLE

NOTICE: ALL DIMENSIONS ARE IN INCHES AND APPLY AFTER FINISH AND BEFORE LUBRICATION UNLESS OTHERWISE SPECIFIED.

WARNING: FASTENERS MAY NOT PERFORM PROPERLY IF ALTERED FROM THE MANUFACTURER'S AS-SHIPPED CONDITION OR INSTALLED IN CONDITIONS OTHER THAN SPECIFIED HEREIN.

PROCUREMENT SPECIFICATION: PS-CMR-3000	CHERRYMAX® RIVET OVERSIZE DIAMETER 100° FLUSH HEAD		SHEET 1 OF 3		PART NUMBER
			ISSUE	11-28-84	CR3852
			REV.	R 29 JAN 19	
NAS 523 CODE: NONE					



GRIP DASH NO.	GRIP RANGE		-4 DIA		-5 DIA		-6 DIA		-8 DIA	
			L	K	L	K	L	K	L	K
	MIN	MAX	+0.000 -.030	MAX	+0.000 -.030	MAX	+0.000 -.030	MAX	+0.000 -.030	MAX
-01	.045	.062	.200	.45	---	---	---	---	---	---
-02	(4)	.125	.238	.45	.266	.47	.265	.48	---	---
-03	.126	.187	.301	.52	.309	.53	.328	.55	.375	.64
-04	.188	.250	.363	.58	.371	.60	.390	.62	.437	.70
-05	.251	.312	.426	.65	.434	.66	.453	.68	.500	.77
-06	.313	.375	.488	.71	.496	.72	.515	.74	.562	.83
-07	.376	.437	.551	.78	.559	.79	.578	.82	.625	.89
-08	.438	.500	.613	.84	.621	.85	.640	.89	.687	.95
-09	.501	.562	.676	.90	.684	.91	.703	.95	.750	1.02
-10	.563	.625	---	---	.746	.98	.765	1.01	.812	1.08
-11	.626	.687	---	---	.809	1.04	.828	1.07	.875	1.14
-12	.688	.750	---	---	---	---	.890	1.14	.937	1.20

FINISH CODE	MATERIAL (5)			FINISH		
	SLEEVE	STEM	LOCK COLLAR	SLEEVE	STEM	LOCK COLLAR
--	INCONEL 600 PER AMS 5687	INCONEL X-750 PER AMS 5698	A-286 CRES PER AMS 5731	NONE	NONE	PASSIVATE PER AMS 2700
(8) DL	INCONEL 600 PER AMS 5687	INCONEL X-750 PER AMS 5698	A-286 CRES PER AMS 5731	NONE	DICRONITE DL-5 OR NONE	PASSIVATE PER AMS 2700
(10) PR	INCONEL 600 PER AMS 5687	INCONEL X-750 PER AMS 5698	A-286 CRES PER AMS 5731	NONE	NONE	PASSIVATE PER AMS 2700

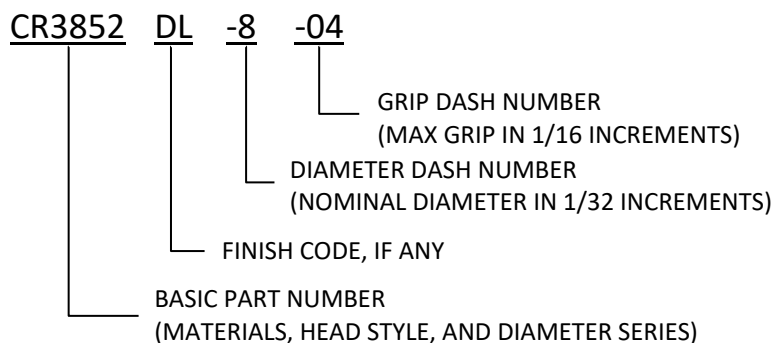
SHEET 2 OF 3		PART NUMBER
ISSUE	11-28-84	
REV.	R	29 JAN 19
CR3852		



NOTES:

- ① HEAD MARKINGS AND LOCK COLLAR VISIBLE AFTER INSTALLATION.
- ② SILVER COLORED DRIVING ANVIL IDENTIFIES OVERSIZE DIAMETER RIVETS.
- ③ MINIMUM BLIND SIDE CLEARANCE FOR SATISFACTORY INSTALLATION. INSPECTION OF THIS FEATURE IS NOT PERFORMED BY THE MANUFACTURER.
- ④ MINIMUM GRIP FOR -4 DIA. IS .063; FOR -5 IS .063; AND FOR -6 IS .073.
- ⑤ MATERIAL DESIGNATION REFERS TO CHEMICAL COMPOSITION ONLY.
6. SHEET THICKNESS FOR MACHINE COUNTERSUNK HOLES SHALL NOT BE LESS THAN "B" +.010.
- ⑦ SINGLE DIGIT HEAD MARKING IS PERMISSIBLE, AT MANUFACTURER'S OPTION, FOR GRIP DASH NUMBERS LESS THAN 10.
- ⑧ "DL" CODE PARTS HAVE NICKEL PLATED DRIVING ANVILS. LUBRICANTS OTHER THAN DICRONITE DL-5 MAY NOT BE USED. "DL" FINISH MEETS SPECIFICATION DOD-L-85645.
- ⑨ A DASH MAY BE MARKED UNDER OR TO THE RIGHT SIDE OF THE GRIP IDENTIFICATION AT MANUFACTURER'S OPTION.
- ⑩ "PR" CODE – PARTS ARE MANUFACTURED BARE; IF LUBE IS REQUIRED, USE PAR 90 ONLY. IN ADDITION, MANUFACTURER'S OPTION TO APPLY MOLYBDENUM DISULFIDE TYPE 1 PER AS 5272, TO STEM ONLY.

PART NUMBER EXAMPLE:



SHEET 3 OF 3		PART NUMBER
ISSUE	11-28-84	
REV.	R	29 JAN 19
CR3852		

STANDARDS PAGE REVISION LOG

REV LTR	DATE	DCR NUMBER	REVISION DESCRIPTION	COMP. BY
R	29 JAN 19	19-0052	<ul style="list-style-type: none">• REWRITTEN IN MS WORD• SHEET 1 – ADDED NOTE ③ TO BK MIN• SHEET 2 – ADDITIONAL COMMENTS ADDED TO NOTE ③	AA