



PRINTED COPIES OF THIS DOCUMENT ARE FOR "REFERENCE" ONLY. CURRENT REVISIONS ARE AVAILABLE ONLINE.

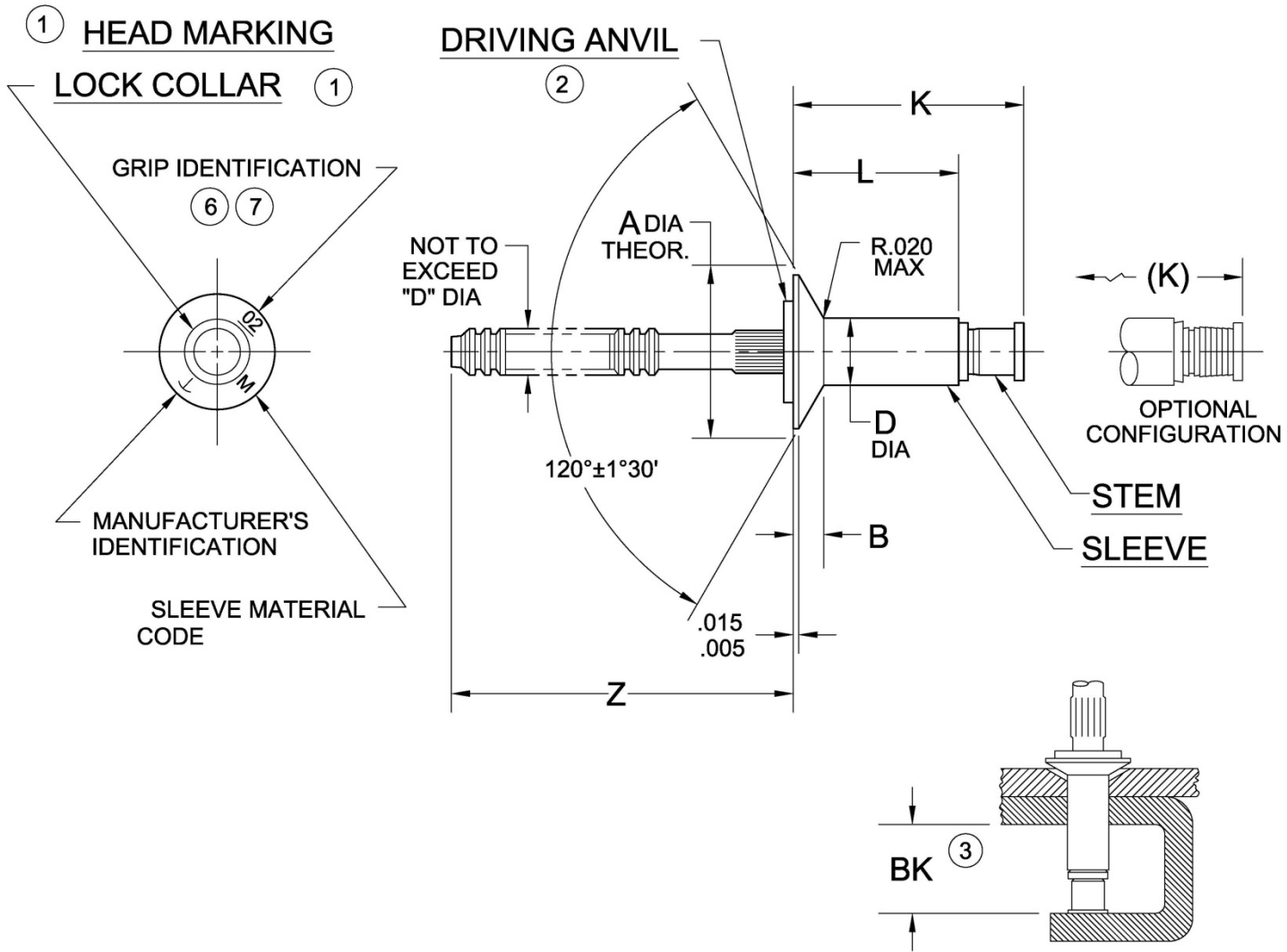


TABLE I

DIA. DASH NO.	A ±.004	B REF	D +.003 -.001	Z MIN	③ BK MIN	HOLE LIMITS	
						MIN	MAX
-4	.272	.038	.140	.87	.390	.143	.146
-5	.314	.041	.173	.94	.395	.176	.180
-6	.350	.048	.201		.410	.205	.209

NOTICE: ALL DIMENSIONS ARE IN INCHES AND APPLY AFTER FINISH AND BEFORE LUBRICATION UNLESS OTHERWISE SPECIFIED.

WARNING: FASTENERS MAY NOT PERFORM PROPERLY IF ALTERED FROM THE MANUFACTURER'S AS-SHIPPED CONDITION OR INSTALLED IN CONDITIONS OTHER THAN SPECIFIED HEREIN.

PROCUREMENT SPECIFICATION:

PS-CMR-3000

NAS 523 CODE:

CHERRYMAX® RIVET
120° FLUSH HEAD
OVERSIZE

SHEET 1 OF 3

PART NUMBER

ISSUE

01-06-84

REV.

L

31 JAN 19

CR3556



TABLE II

FINISH CODE	MATERIAL ④			FINISH		
	SLEEVE	STEM	LOCK COLLAR	SLEEVE	STEM ⑧	LOCK COLLAR
---	MONEL PER QQ-N-281	15-7 PH CRES PER AMS 5657	A-286 CRES PER AMS 5731	NONE	NONE	PASSIVATE PER AMS 2700
P				ALUM COAT PER MIL-DTL-83488		
PR ⑨				NONE		
GP ⑩				ALUM COAT PER MIL-DTL-83488 CL 3, TYPE II (SUPPLEMENTAL: MIL-DTL-5541 CL 1A, TYPE II)		

TABLE III

GRIP DASH NO.	GRIP RANGE		-4 DIA		-5 DIA		-6 DIA	
	MIN	MAX	L +.000 -.030	K MAX	L +.000 -.030	K MAX	L +.000 -.030	K MAX
-02	.063	.125	.238	.45	.266	.47	.265	.48
-03	.126	.187	.301	.52	.309	.53	.328	.55
-04	.188	.250	.363	.58	.371	.60	.390	.62
-05	.251	.312	.426	.65	.434	.66	.453	.68
-06	.313	.375	.488	.71	.496	.72	.515	.74

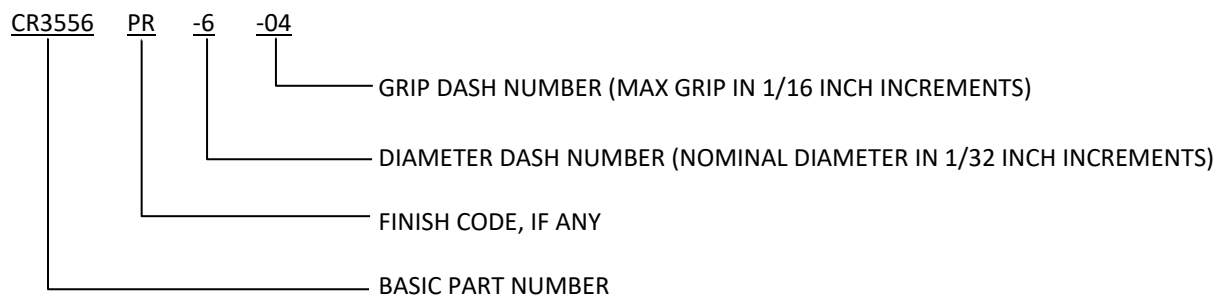
SHEET 2 OF 3			PART NUMBER	
ISSUE	01-06-84		CR3556	
REV.	L	31 JAN 19		



NOTES:

- ① HEAD MARKINGS AND LOCK COLLAR VISIBLE AFTER INSTALLATION.
- ② SILVER COLORED DRIVING ANVIL IDENTIFIES OVERSIZE DIAMETER RIVETS.
- ③ MINIMUM BLIND SIDE CLEARANCE FOR SATISFACTORY INSTALLATION. INSPECTION OF THIS FEATURE IS NOT PERFORMED BY THE MANUFACTURER.
- ④ MATERIAL DESIGNATION REFERS TO CHEMICAL COMPOSITION ONLY.
- 5. SHEET THICKNESS FOR MACHINE COUNTERSUNK HOLES SHALL NOT BE LESS THAN "B" +.010.
- ⑥ SINGLE DIGIT HEAD MARKING IS PERMISSIBLE, AT MANUFACTURER'S OPTION, FOR GRIP DASH NUMBERS LESS THAN 10.
- ⑦ A DASH MAY BE MARKED UNDER OR TO THE RIGHT SIDE OF THE GRIP IDENTIFICATION AT MANUFACTURER'S OPTION.
- ⑧ FOR STEMS ONLY, IT IS MANUFACTURER'S OPTIONS TO APPLY MOLYBDENUM DISULFIDE TYPE 1 PER AS 5272 (CHEMISTRY ONLY).
- ⑨ "PR" CODE – PARTS ARE MANUFACTURED BARE; IF LUBE IS REQUIRED, USE PAR 90 ONLY.
- ⑩ FINISH CODES WITH THE PREFIX "G" INDICATE REACH COMPLIANT COATING.

EXAMPLE OF CHERRY PART NUMBER:



SHEET 3 OF 3		PART NUMBER
ISSUE	01-06-84	
REV.	L	31 JAN 19
CR3556		

STANDARDS PAGE REVISION LOG

REV LTR	DATE	DCR NUMBER	REVISION DESCRIPTION	COMP. BY
L	31 JAN 19	19-0052	<ul style="list-style-type: none">• SHEET 1 – ADDED NOTE ③ TO BK MIN• SHEET 2 – ADDITIONAL COMMENT ADDED TO NOTE ③	AA