



PRINTED COPIES OF THIS DOCUMENT ARE FOR "REFERENCE" ONLY. CURRENT REVISIONS ARE AVAILABLE ONLINE.

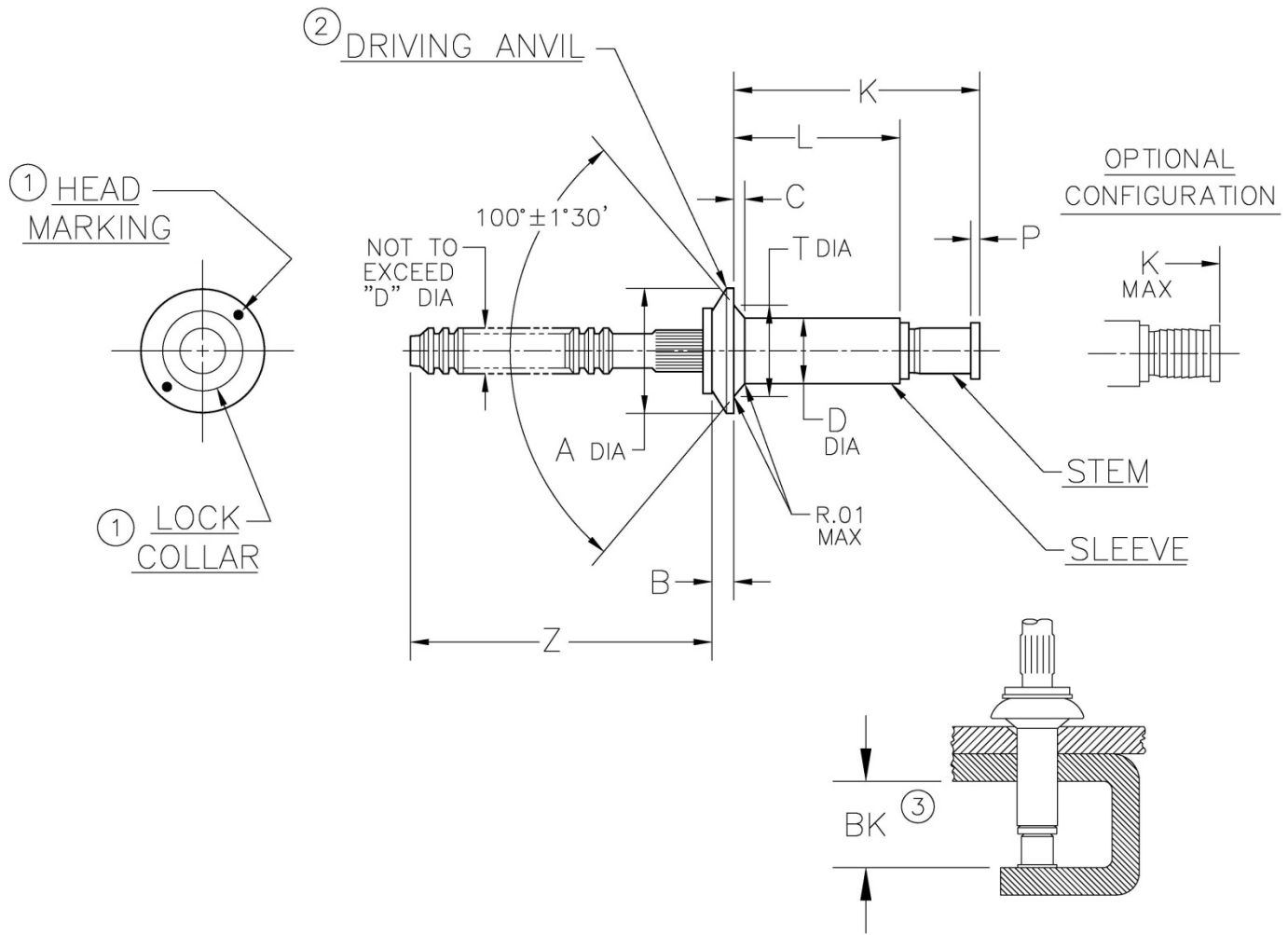


TABLE I

DIA. DASH NO.	A ±.010	B +.010 -.000	C REF	D +.003 -.001	P MIN	T ±.005	Z MIN	BK ③ MIN	HOLE LIMITS	
									MIN	MAX
-4	.220	.022	.011	.140	.010	.165	.87	.375	.143	.146
-5	.286	.030	.015	.173	.015	.208	.94	.400	.176	.180
-6	.353	.040	.023	.201		.255		.435	.205	.209

NOTICE: ALL DIMENSIONS ARE IN INCHES AND APPLY AFTER FINISH AND BEFORE LUBRICATION UNLESS OTHERWISE SPECIFIED.

WARNING: FASTENERS MAY NOT PERFORM PROPERLY IF ALTERED FROM THE MANUFACTURER'S AS-SHIPED CONDITION OR INSTALLED IN CONDITIONS OTHER THAN SPECIFIED HEREIN.

PROCUREMENT SPECIFICATION:

PS-CMR-3000

NAS 523 CODE: SEE TABLE II

CHERRYMAX® RIVET
UNISINK HEAD LOCKED SPINDLE
OVERSIZE

SHEET 1 OF 3

PART NUMBER

ISSUE

10-21-96

REV.

U

31 JAN 19

CR3555



TABLE II

FINISH CODE	NAS523 CODE	MATERIAL ④			FINISH		
		SLEEVE	STEM	LOCK COLLAR	SLEEVE	STEM	LOCK COLLAR
---	AZF	MONEL PER QQ-N-281	15-7 PH CRES PER AMS 5657	A-286 CRES PER AMS 5731 & AMS 5737	NONE	NONE	PASSIVATE PER AMS 2700
EE	---				ALUM COAT PER NAS4006 & BMS1085		
P	AZH				ALUM COAT PER MIL-DTL-83488		
PR ⑤	---				NONE		
GEE ⑥	---				ALUM COAT PER NAS4006 CLASS NC		
GP ⑥	---				ALUM COAT PER MIL-DTL-83488 CL 3, TYPE II (SUPPLEMENTAL: MIL-DTL-5541 CL 1A, TYPE II)		

TABLE III

GRIP DASH NO.	GRIP RANGE		-4 DIA		-5 DIA		-6 DIA	
	MIN	MAX	L +.000 -.030	K MAX	L +.000 -.030	K MAX	L +.000 -.030	K MAX
-01	.033	.062	.170	.39	---	---	---	---
-02	.063	.125	.213	.43	.246	.46	.265	.50
-03	.126	.187	.276	.50	.309	.52	.328	.56
-04	.188	.250	.338	.56	.371	.59	.390	.62
-05	.251	.312	.401	.62	.434	.65	.453	.68
-06	.313	.375	.463	.68	.496	.71	.515	.75
-07	.376	.437	.526	.74	.559	.77	.578	.81
-08	.438	.500	.588	.80	.621	.83	.640	.87

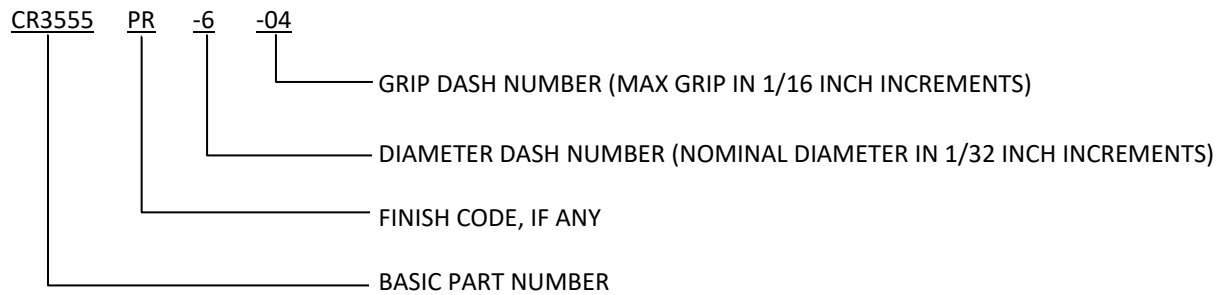
SHEET 2 OF 3			PART NUMBER
ISSUE	10-21-96		CR3555
REV.	U	31 JAN 19	



NOTES:

- ① HEAD MARKINGS AND LOCK COLLAR VISIBLE AFTER INSTALLATION.
- ② SILVER COLORED DRIVING ANVIL IDENTIFIES OVERSIZE DIAMETER RIVETS.
- ③ MINIMUM BLIND SIDE CLEARANCE FOR SATISFACTORY INSTALLATION.
INSPECTION OF THIS FEATURE IS NOT PERFORMED BY THE MANUFACTURER.
- ④ MATERIAL DESIGNATION REFERS TO CHEMICAL COMPOSITION ONLY.
- ⑤ “PR” CODE – PARTS ARE MANUFACTURED BARE; IF LUBE IS REQUIRED, USE PAR 90 ONLY. IN ADDITION,
MANUFACTURER’S OPTIONS TO APPLY MOLYBDENUM DISULFIDE TYPE 1 PER AS 5272, TO STEM ONLY.
- ⑥ FINISH CODES WITH THE PREFIX “G” INDICATE REACH COMPLIANT COATING.

EXAMPLE OF CHERRY PART NUMBER:



SHEET 3 OF 3		PART NUMBER
ISSUE	10-21-96	CR3555
REV.	U 31 JAN 19	

STANDARDS PAGE REVISION LOG

REV LTR	DATE	DCR NUMBER	REVISION DESCRIPTION	COMP. BY
U	31 JAN 19	19-0052	<ul style="list-style-type: none">SHEET 1 – ADDED NOTE ③ TO BK MINSHEET 2 – ADDITIONAL COMMENT ADDED TO NOTE ③	AA