



PRINTED COPIES OF THIS DOCUMENT ARE FOR "REFERENCE" ONLY. CURRENT REVISIONS ARE AVAILABLE ONLINE.

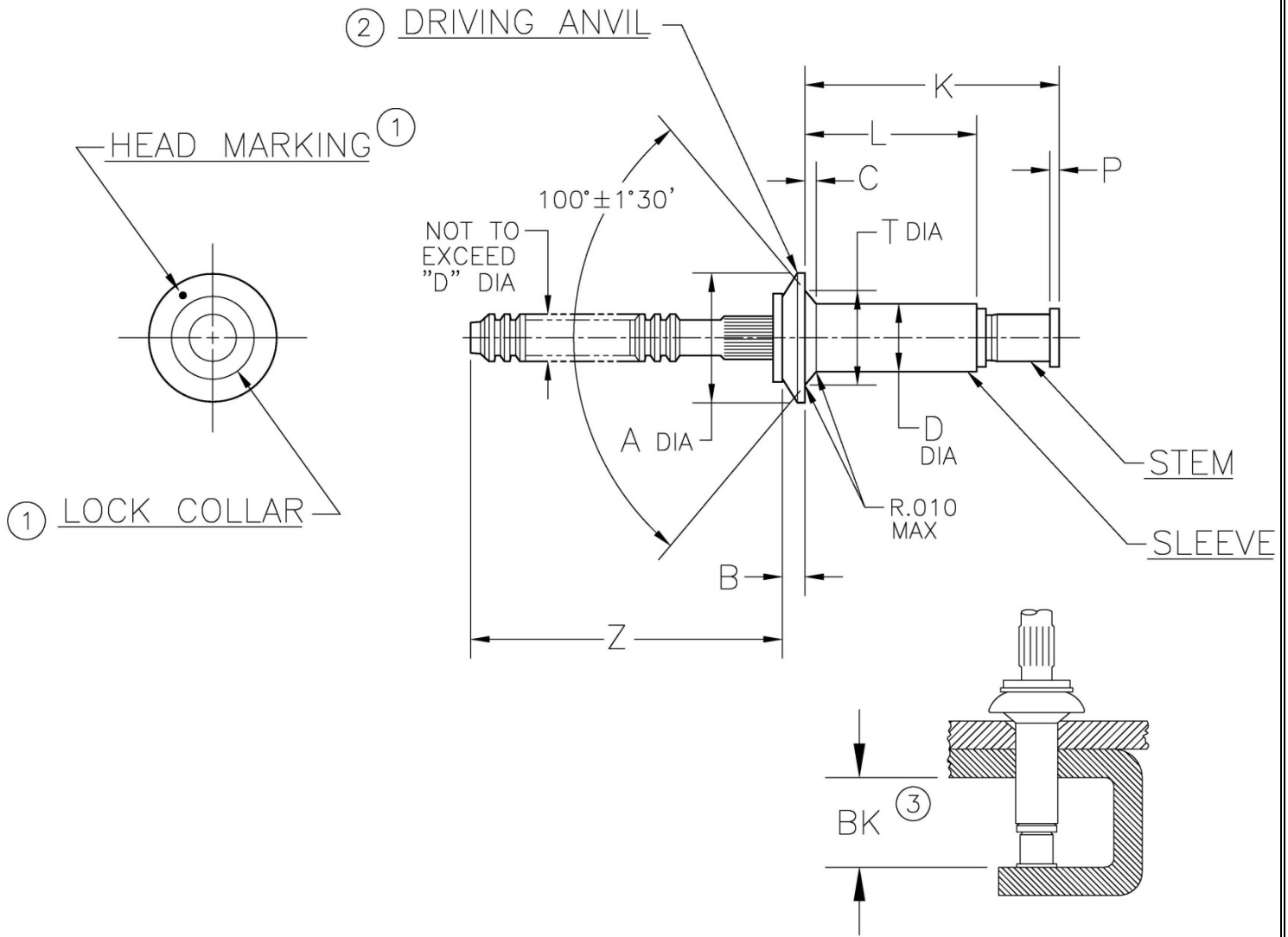


TABLE I

DIA. DASH NO.	A ±.010	B +.010 -.000	C REF	D +.003 -.001	P MIN	T ±.005	Z MIN	③ BK MIN	HOLE LIMITS	
									MIN	MAX
-4	.220	.022	.011	.140	.010	.165	.87	.375	.143	.146
-5	.286	.030	.015	.173	.015	.208	.94	.400	.176	.180
-6	.353	.040	.023	.201		.255		.435	.205	.209

NOTICE: ALL DIMENSIONS ARE IN INCHES AND APPLY AFTER FINISH AND BEFORE LUBRICATION UNLESS OTHERWISE SPECIFIED.

WARNING: FASTENERS MAY NOT PERFORM PROPERLY IF ALTERED FROM THE MANUFACTURER'S AS-SHIPPED CONDITION OR INSTALLED IN CONDITIONS OTHER THAN SPECIFIED HEREIN.

PROCUREMENT SPECIFICATION:  PS-CMR-3000  NAS 523 CODE: SEE TABLE II	<b>CHERRYMAX® RIVET</b> OVERSIZE DIAMETER UNISINK HEAD		SHEET 1 OF 3		PART NUMBER	
			ISSUE	06-12-84	<b>CR3255</b>	
			REV.	V 31 JAN 19		



**TABLE II**

FINISH CODE	NAS 523 CODE	MATERIAL ④			FINISH						
		SLEEVE	STEM	LOCK COLLAR	SLEEVE	STEM	LOCK COLLAR				
---	AYR	5056 ALUM PER QQ-A-430	15-7 PH CRES PER AMS 5657	A-286 CRES PER AMS 5731 & AMS 5737	CHEM. FILM PLAIN COLOR PER MIL-DTL-5541	PASSIVATE PER AMS 2700	PASSIVATE PER AMS 2700				
CF	---							CHEM. FILM PLAIN COLOR PER MIL-DTL-5541	PASSIVATE PER AMS 2700 & DICRONITE DL-5		
DL ⑤	---									TUNGSTEN DISULFIDE OR PASSIVATE PER AMS 2700	
TD ⑤	---										PASSIVATE PER AMS 2700
PR ⑥	---										
G ⑦	---				CHEM. FILM PLAIN COLOR PER MIL-DTL-5541 CL 1A, TYPE II	PASSIVATE PER AMS 2700					
GCF ⑦	---							PASSIVATE PER AMS 2700 & DICRONITE DL-5			
GDL ⑤⑦	---								TUNGSTEN DISULFIDE OR PASSIVATE PER AMS 2700		
GTD ⑤⑦	---									PASSIVATE PER AMS 2700	
GPR ⑥⑦	---										PASSIVATE PER AMS 2700

SHEET 2 OF 3		PART NUMBER
ISSUE	06-12-84	CR3255
REV.	V 31 JAN 19	



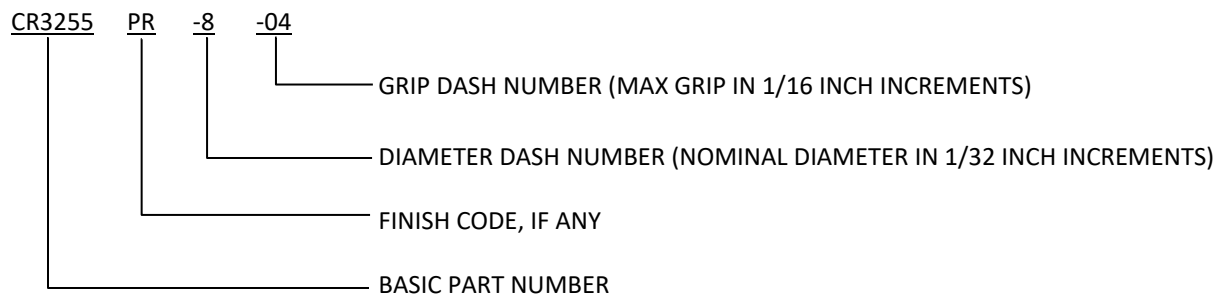
**TABLE III**

GRIP DASH NO.	GRIP RANGE		-4 DIA		-5 DIA		-6 DIA	
	MIN	MAX	L +.000 -.030	K MAX	L +.000 -.030	K MAX	L +.000 -.030	K MAX
-01	.033	.062	.170	.39	---	---	---	---
-02	.063	.125	.213	.43	.246	.46	.265	.50
-03	.126	.187	.276	.50	.309	.52	.328	.56
-04	.188	.250	.338	.56	.371	.59	.390	.62
-05	.251	.312	.401	.62	.434	.65	.453	.68
-06	.313	.375	.463	.68	.496	.71	.515	.75
-07	.376	.437	.526	.74	.559	.77	.578	.81
-08	.438	.500	.588	.80	.621	.83	.640	.87

**NOTES:**

- ① HEAD MARKINGS AND LOCK COLLAR VISIBLE AFTER INSTALLATION.
- ② SILVER COLORED DRIVING ANVIL IDENTIFIES OVERSIZE DIAMETER RIVETS.
- ③ MINIMUM BLIND SIDE CLEARANCE FOR SATISFACTORY INSTALLATION. INSPECTION OF THIS FEATURE IS NOT PERFORMED BY THE MANUFACTURER.
- ④ MATERIAL DESIGNATION REFERS TO CHEMICAL COMPOSITION ONLY.
- ⑤ "DL AND "TD" FINISH CODE PARTS HAVE NICKEL PLATED DRIVING ANVILS. LUBRICANTS OTHER THAN THOSE SPECIFIED MAY NOT BE USED. "DL" AND "TD" FINISHES MEET SPECIFICATION DOD-L-85645.
- ⑥ "PR" CODE – PARTS ARE MANUFACTURED BARE; IF LUBE IS REQUIRED, USE PAR 90 ONLY. IN ADDITION, MANUFACTURER'S OPTION TO APPLY MOLYBDENUM DISULFIDE TYPE I PER AS5272 TO STEM ONLY.
- ⑦ FINISH CODES WITH THE PREFIX "G" INDICATE REACH COMPLIANT COATING.

**EXAMPLE OF CHERRY PART NUMBER:**



SHEET 3 OF 3		PART NUMBER
ISSUE	06-12-84	
REV.	V	31 JAN 19
<b>CR3255</b>		

## STANDARDS PAGE REVISION LOG

REV LTR	DATE	DCR NUMBER	REVISION DESCRIPTION	COMP. BY
V	31 JAN 19	19-0052	<ul style="list-style-type: none"><li>• SHEET 1 – ADDED NOTE ③ TO BK MIN</li><li>• SHEET 2 – ADDITIONAL COMMENT ADDED TO NOTE ③</li></ul>	CL