



PRINTED COPIES OF THIS DOCUMENT ARE FOR "REFERENCE" ONLY. CURRENT REVISIONS ARE AVAILABLE ONLINE.

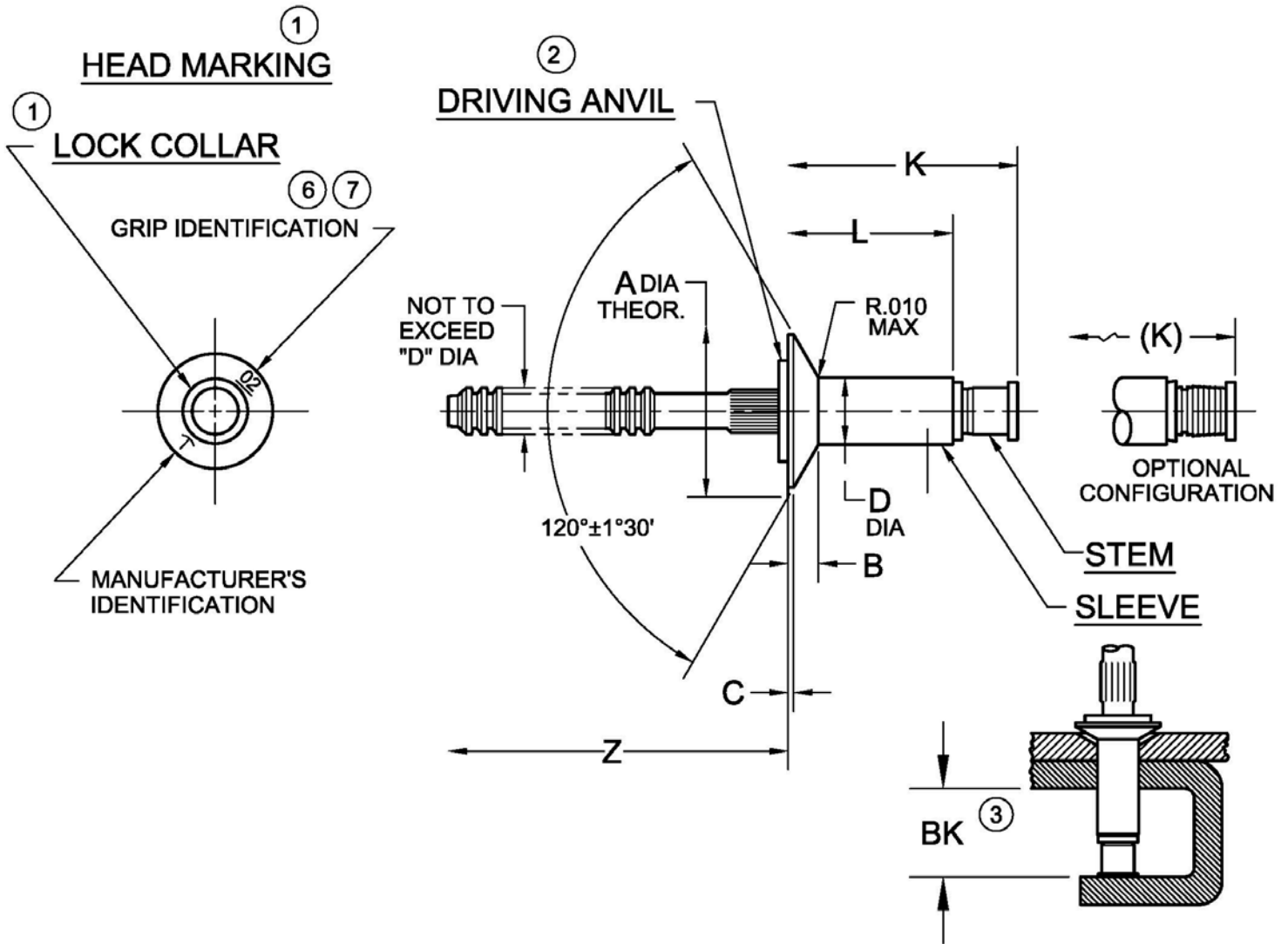


TABLE I

DIA. DASH NO.	A ±.004	B REF	C	D +.003 -.001	Z MIN	BK <sup>③</sup> MIN	HOLE LIMITS	
							MIN	MAX
-4	.272	.038	.002 - .010	.140	.87	.390	.143	.146
-5	.314	.041	.002 - .012	.173	.94	.395	.176	.180
-6	.350	.048	.002 - .012	.201		.410	.205	.209

NOTICE: ALL DIMENSIONS ARE IN INCHES AND APPLY AFTER FINISH AND BEFORE LUBRICATION UNLESS OTHERWISE SPECIFIED.

WARNING: FASTENERS MAY NOT PERFORM PROPERLY IF ALTERED FROM THE MANUFACTURER'S AS-SHIPPED CONDITION OR INSTALLED IN CONDITIONS OTHER THAN SPECIFIED HEREIN.

PROCUREMENT SPECIFICATION:	<b>CHERRYMAX® RIVET</b> 120° FLUSH HEAD OVERSIZE	SHEET 1 OF 3		PART NUMBER
PS-CMR-3000		ISSUE	9-24-96	<b>CR3246</b>
NAS 523 CODE:		REV.	N 31 JAN 19	



**TABLE II**

FINISH CODE	MATERIAL ④			FINISH		
	SLEEVE	STEM	LOCK COLLAR	SLEEVE	STEM	LOCK COLLAR
---	5056 ALUMINUM PER QQ-A-430	8740 STEEL PER AMS6322	A-286 CRES PER AMS 5731	MIL-C-5541 PER PLAIN COLOR	CAD. PLATE PER AMS-QQ-P-416, TYPE II, CL2	PASSIVATE PER AMS 2700
PR ⑧						

**TABLE III**

GRIP DASH NO.	GRIP RANGE		-4 DIA		-5 DIA		-6 DIA	
	MIN	MAX	L +.000 -.030	K MAX	L +.000 -.030	K MAX	L +.000 -.030	K MAX
-02	.063	.125	.238	.45	.266	.47	.265	.48
-03	.126	.187	.301	.52	.309	.53	.328	.55
-04	.188	.250	.363	.58	.371	.60	.390	.62
-05	.251	.312	.426	.65	.434	.66	.453	.68
-06	.313	.375	.488	.71	.496	.72	.515	.74
-07	.376	.437	.551	.78	.559	.79	.578	.82
-08	.438	.500	.613	.84	.621	.85	.640	.89
-09	.501	.562	.676	.90	.684	.91	.703	.95
-10	.563	.625	---	---	.746	.98	.765	1.01
-11	.626	.687	---	---	.809	1.04	.828	1.07

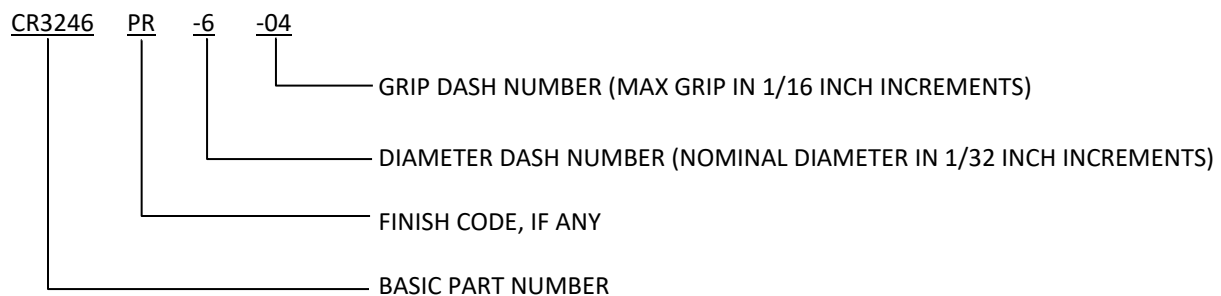
SHEET 2 OF 3		PART NUMBER
ISSUE	9-24-96	
REV.	N	31 JAN 19
<b>CR3246</b>		



## NOTES:

- ① HEAD MARKINGS AND LOCK COLLAR VISIBLE AFTER INSTALLATION.
- ② SILVER COLORED DRIVING ANVIL IDENTIFIES OVERSIZE DIAMETER RIVETS.
- ③ MINIMUM BLIND SIDE CLEARANCE FOR SATISFACTORY INSTALLATION.  
INSPECTION OF THIS FEATURE IS NOT PERFORMED BY THE MANUFACTURER.
- ④ MATERIAL DESIGNATION REFERS TO CHEMICAL COMPOSITION ONLY.
5. SHEET THICKNESS FOR MACHINE COUNTERSUNK HOLES SHALL NOT BE LESS THAN "B" +.010.
- ⑥ SINGLE DIGIT HEAD MARKING IS PERMISSIBLE, AT MANUFACTURER'S OPTION, FOR GRIP DASH NUMBERS LESS THAN 10.
- ⑦ A DASH MAY BE MARKED UNDER OR TO THE RIGHT SIDE OF THE GRIP IDENTIFICATION AT MANUFACTURER'S OPTION.
- ⑧ PR" CODE – PARTS ARE MANUFACTURED BARE; IF LUBE IS REQUIRED, USE PAR 90 ONLY.

## EXAMPLE OF CHERRY PART NUMBER:



SHEET 3 OF 3		PART NUMBER
ISSUE	9-24-96	CR3246
REV.	N 31 JAN 19	

# STANDARDS PAGE REVISION LOG

# CR3246

REV LTR	DATE	DCR NUMBER	REVISION DESCRIPTION	COMP. BY
N	31 JAN 19	19-0052	<ul style="list-style-type: none"><li>• SHEET 1 – ADDED NOTE ③ TO BK MIN</li><li>• SHEET 2 – ADDITIONAL COMMENT ADDED TO NOTE ③</li></ul>	AA