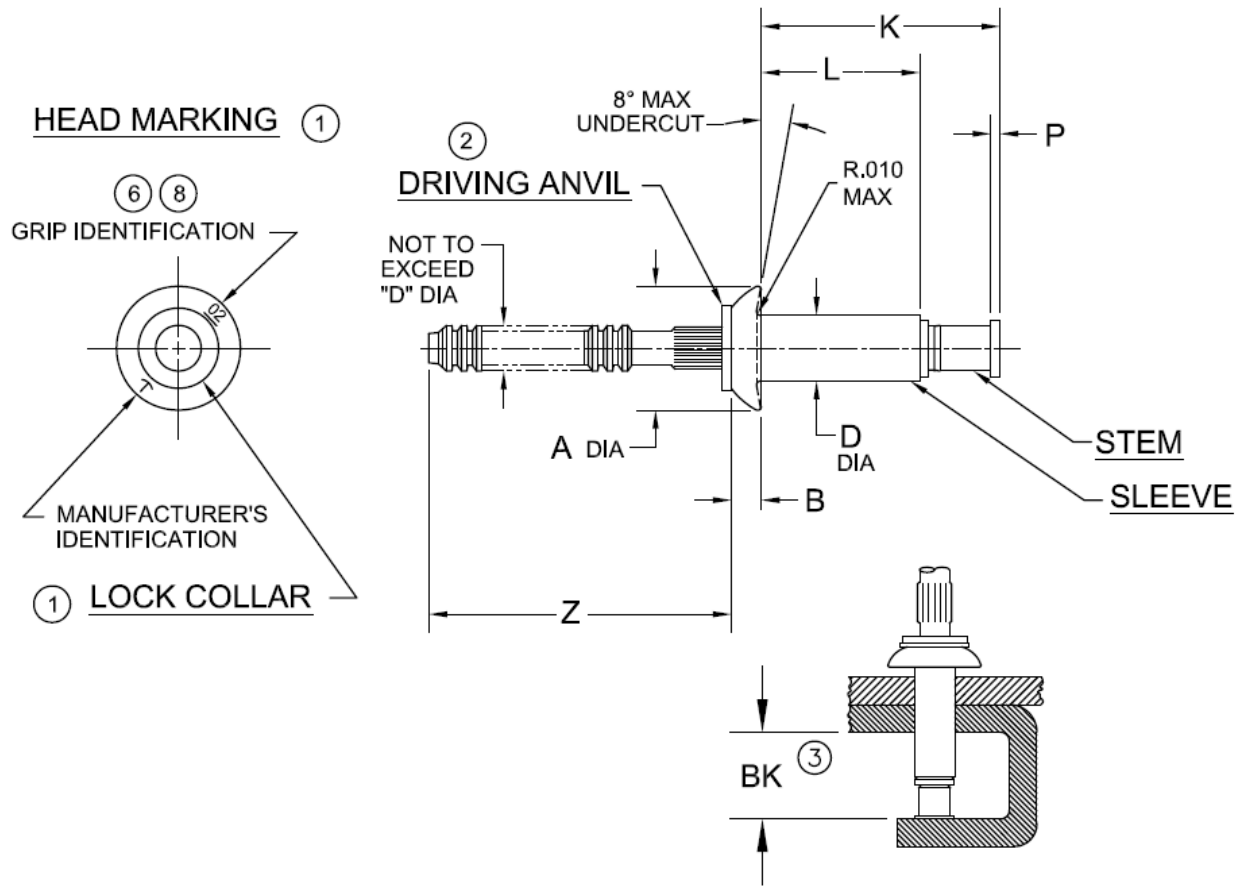




PRINTED COPIES OF THIS DOCUMENT ARE FOR "REFERENCE" ONLY. CURRENT REVISIONS ARE AVAILABLE ONLINE.



DIA. DASH NO.	A	B	D	P	Z	BK ③	HOLE LIMITS	
							MIN	MAX
-4	±.010 .250	+0.010 -.000 .054	+0.003 -.001 .140	MIN .010	MIN .87	MIN .390	.143	.146
-5	.312	.067	.173	.015	.94	.395	.176	.180
-6	.375	.080	.201	.015	.94	.410	.205	.209
-8	.500	.107	.267	.015	.96	.490	.271	.275

SEE SHEET 2 FOR LENGTH DIMENSIONS, MATERIALS AND FINISHES

SEE SHEET 3 FOR NOTES AND PART NUMBER EXAMPLE

NOTICE: ALL DIMENSIONS ARE IN INCHES AND APPLY AFTER FINISH AND BEFORE LUBRICATION UNLESS OTHERWISE SPECIFIED.

WARNING: FASTENERS MAY NOT PERFORM PROPERLY IF ALTERED FROM THE MANUFACTURER'S AS-SHIPPED CONDITION OR INSTALLED IN CONDITIONS OTHER THAN SPECIFIED HEREIN.

PROCUREMENT SPECIFICATION:

PS-CMR-3000

NAS 523 CODE: SEE SHEET 2

CHERRYMAX® RIVET
UNIVERSAL HEAD LOCKED SPINDLE
(OVERSIZE)

SHEET 1 OF 3

PART NUMBER

ISSUE

06-24-92

REV.

AD

29 JAN 19

CR3243



GRIP DASH NO. ⑥	GRIP LIMITS 1/16 RANGE		-4 DIA		-5 DIA		-6 DIA		-8 DIA		
			L	K	L	K	L	K	L	K	
	MIN	MAX	+0.000 -.030	MAX	+0.000 -.030	MAX	+0.000 -.030	MAX	+0.000 -.030	MAX	
-01	④	.062	.175	.37	.203	.43	.242	.45	----	----	
-02		.063	.125	.238	.46	.246	.47	.265	.50	.313	.57
-03		.126	.187	.301	.52	.309	.53	.328	.55	.375	.64
-04		.188	.250	.363	.58	.371	.60	.390	.62	.437	.70
-05		.251	.312	.426	.65	.434	.66	.453	.68	.500	.77
-06		.313	.375	.488	.71	.496	.72	.515	.74	.562	.83
-07		.376	.437	.551	.78	.559	.79	.578	.82	.625	.89
-08		.438	.500	.613	.84	.621	.85	.640	.89	.687	.95
-09		.501	.562	.676	.90	.684	.91	.703	.95	.750	1.02
-10		.563	.625	----	----	.746	.98	.765	1.01	.812	1.08
-11		.626	.687	----	----	.809	1.04	.828	1.07	.875	1.14
-12		.688	.750	----	----	----	----	.890	1.14	.937	1.20
-13		.751	.812	----	----	----	----	.953	1.20	1.000	1.27
-14		.813	.875	----	----	----	----	----	----	1.062	1.60

FINISH CODE	NAS 523 CODE	MATERIAL ⑤			FINISH		
		SLEEVE	STEM	LOCK COLLAR	SLEEVE	STEM	LOCK COLLAR
----	ARE	5056 ALUM. PER QQ-A-430	8740 STEEL PER AMS 6322	A-286 CRES PER AMS 5731 & AMS 5737	CHEM. FILM PLAIN COLOR PER MIL-C-5541	CAD. PLATE PER QQ-P-416 TYPE II, CL.2	PASSIVATE PER AMS2700
A	----	5056 ALUM. PER QQ-A-430	8740 STEEL PER AMS 6322	A-286 CRES PER AMS 5731 & AMS 5737	CHEM. FILM GOLD COLOR PER MIL-C-5541	CAD. PLATE PER QQ-P-416 TYPE II, CL.2	PASSIVATE PER AMS2700
PR ⑨	ARE	5056 ALUM. PER QQ-A-430	8740 STEEL PER AMS 6322	A-286 CRES PER AMS 5731 & AMS 5737	CHEM. FILM PLAIN COLOR PER MIL-C-5541	CAD. PLATE PER QQ-P-416 TYPE II, CL.2	PASSIVATE PER AMS2700
T ⑦	----	5056 ALUM. PER QQ-A-430	8740 STEEL PER AMS 6322	A-286 CRES PER AMS 5731 & AMS 5737	CHEM. FILM PLAIN COLOR PER MIL-C-5541	CAD. PLATE PER QQ-P-416 TYPE II, CL.2	PASSIVATE PER AMS2700
APR ⑨	----	5056 ALUM. PER QQ-A-430	8740 STEEL PER AMS 6322	A-286 CRES PER AMS 5731 & AMS 5737	CHEM. FILM GOLD COLOR PER MIL-C-5541	CAD. PLATE PER QQ-P-416 TYPE II, CL.2	PASSIVATE PER AMS2700

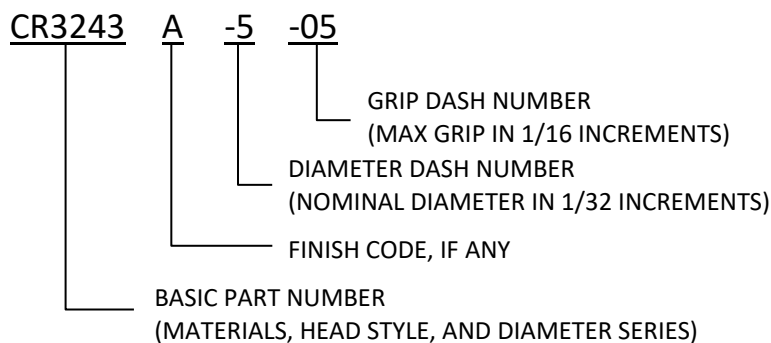
SHEET 2 OF 3			PART NUMBER
ISSUE	06-24-92		CR3243
REV.	AD	29 JAN 19	



NOTES:

- ① HEAD MARKINGS AND LOCK COLLAR VISIBLE AFTER INSTALLATION.
- ② SILVER COLORED DRIVING ANVIL IDENTIFIES OVERSIZE DIAMETER RIVETS.
- ③ MINIMUM BLIND SIDE CLEARANCE FOR SATISFACTORY INSTALLATION. INSPECTION OF THIS FEATURE IS NOT PERFORMED BY THE MANUFACTURER.
- ④ MINIMUM GRIP FOR -4 DIA. IS .025; FOR -5 IS .031; AND FOR -6 IS .037.
- ⑤ MATERIAL DESIGNATION REFERS TO CHEMICAL COMPOSITION ONLY.
- ⑥ SINGLE DIGIT HEAD MARKING IS PERMISSIBLE, AT MANUFACTURER'S OPTION, FOR GRIP DASH NUMBERS LESS THAN 10.
- ⑦ "T" CODE - PARTS ARE MANUFACTURED BARE; IF LUBE IS REQUIRED, USE TRANSLUBE 20204 ONLY. TRANSLUBE ("T" CODE) WILL BE UNAVAILABLE FOR PROCUREMENT AS OF 01-01-92.
- ⑧ A DASH MAY BE MARKED UNDER OR TO THE RIGHT SIDE OF THE GRIP IDENTIFICATION AT MANUFACTURER'S OPTION.
- ⑨ "PR" CODE - PARTS ARE MANUFACTURED BARE; IF LUBE IS REQUIRED, USE PAR 90 ONLY.

PART NUMBER EXAMPLE:



SHEET 3 OF 3		PART NUMBER
ISSUE	06-24-92	
REV.	AD	29 JAN 19
CR3243		

STANDARDS PAGE REVISION LOG

REV LTR	DATE	DCR NUMBER	REVISION DESCRIPTION	COMP. BY
AD	29 JAN 19	19-0052	<ul style="list-style-type: none">• REWRITTEN IN MS WORD• SHEET 1 – ADDED NOTE ③ TO BK MIN• SHEET 2 – ADDITIONAL COMMENTS ADDED TO NOTE ③	AA