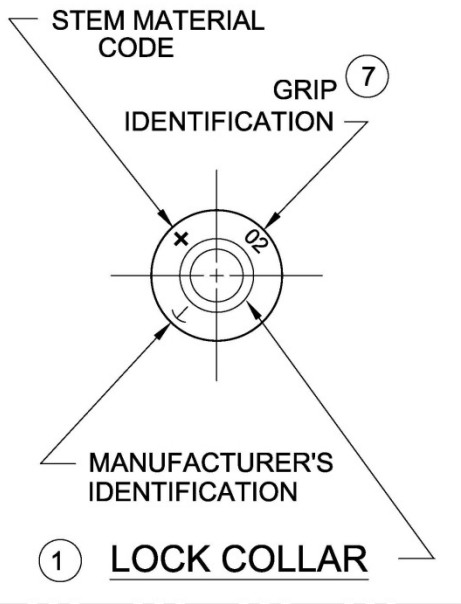




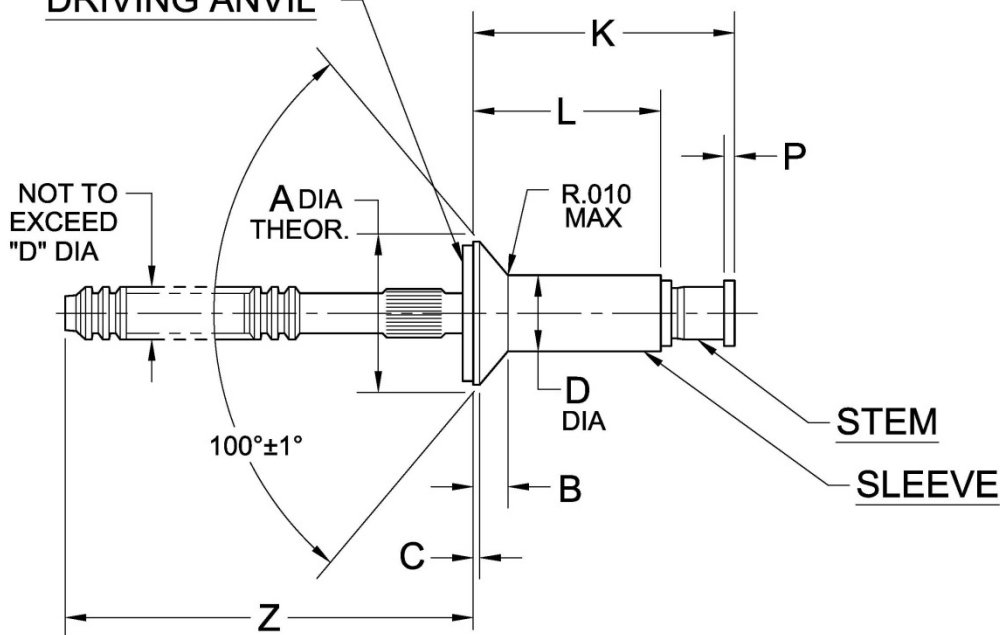
PRINTED COPIES OF THIS DOCUMENT ARE FOR "REFERENCE" ONLY. CURRENT REVISIONS ARE AVAILABLE ONLINE.

HEAD MARKING ①

FOR -6 AND -8 DIA ONLY



DRIVING ANVIL ②



HEAD MARKING ①

FOR -4 AND -5 DIA ONLY

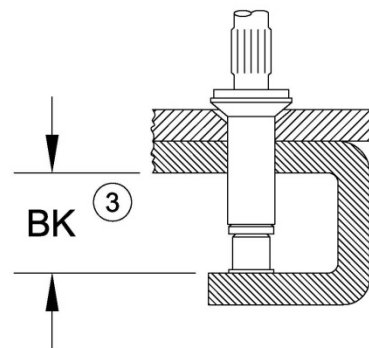
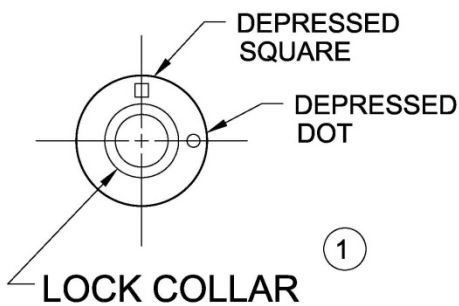


TABLE I

DIA. DASH NO.	A ±.004	B REF	C	D +.003 -.001	P MIN	Z REF	BK③ MIN	HOLE LIMITS	
								MIN	MAX
-4	.192	.028	.002-.006	.126	.010	.87	.355	.129	.132
-5	.243	.037		.157		.370	.160	.164	
-6	.299	.046	.002-.016	.189	.015	.94	.415	.192	.196
-8	.392	.060		.253		.485	.256	.261	

NOTICE: ALL DIMENSIONS ARE IN INCHES AND APPLY AFTER FINISH AND BEFORE LUBRICATION UNLESS OTHERWISE SPECIFIED.

WARNING: FASTENERS MAY NOT PERFORM PROPERLY IF ALTERED FROM THE MANUFACTURER'S AS-SHIPED CONDITION OR INSTALLED IN CONDITIONS OTHER THAN SPECIFIED HEREIN.

PROCUREMENT SPECIFICATION: PS-CMR-3000 NAS 523 CODE: SEE TABLE II	CHERRYMAX ® RIVET NOMINAL DIAMETER NAS 1097 100° FLUSH HEAD		SHEET 1 OF 4		PART NUMBER	
			ISSUE	03-31-83		CR3224
			REV.	AE	31 JAN 19	



TABLE II

FINISH CODE	NAS 523 CODE	MATERIAL ⑤			FINISH				
		SLEEVE	STEM	LOCK COLLAR	SLEEVE	STEM	LOCK COLLAR		
---	ATJ OR AYK	5056 ALUM PER QQ-A-430	15-7 PH CRES PER AMS 5657	A-286 CRES PER AMS 5731 & AMS 5737	CHEM. FILM PLAIN COLOR PER MIL-DTL-5541	PASSIVATE PER AMS 2700	PASSIVATE PER AMS 2700		
CF	---							PASSIVATE PER AMS 2700 & DICRONITE DL-5	
DL ⑨	---								PASSIVATE PER AMS 2700
PR ⑧	---								
G ⑩	---				CHEM. FILM PLAIN COLOR PER MIL-DTL-5541 CL 1A, TYPE II	PASSIVATE PER AMS 2700			
GCF ⑩	---							PASSIVATE PER AMS 2700 & DICRONITE DL-5	
GDL ⑨ ⑩	---								PASSIVATE PER AMS 2700
GPR ⑧ ⑩	---								

SHEET 2 OF 4			PART NUMBER
ISSUE	03-31-83		CR3224
REV.	AE	31 JAN 19	



TABLE III

GRIP DASH NO.	GRIP RANGE		-4 DIA		-5 DIA		-6 DIA		-8 DIA	
	MIN	MAX	L +.000 -.030	K MAX	L +.000 -.030	K MAX	L +.000 -.030	K MAX	L +.000 -.030	K MAX
-01	.045	.062	.221	.45	---	---	---	---	---	---
-02	④	.125	.224	.45	.230	.47	.262	.51	---	---
-03	.126	.187	.287	.51	.293	.53	.325	.57	.378	.65
-04	.188	.250	.349	.57	.355	.59	.387	.64	.440	.72
-05	.251	.312	.412	.63	.418	.65	.450	.70	.503	.78
-06	.313	.375	.474	.70	.480	.72	.512	.76	.565	.84
-07	.376	.437	.537	.76	.543	.77	.575	.82	.628	.90
-08	.438	.500	.599	.82	.605	.84	.637	.88	.690	.97
-09	.501	.562	.662	.88	.668	.90	.700	.95	.753	1.03
-10	.563	.625	---	---	.730	.96	.762	1.01	.815	1.09
-11	.626	.687	---	---	.793	1.02	.825	1.07	.878	1.15
-12	.688	.750	---	---	---	---	.887	1.13	.940	1.22
-13	.751	.812	---	---	---	---	---	---	1.003	1.28
-14	.813	.875	---	---	---	---	---	---	1.065	1.34

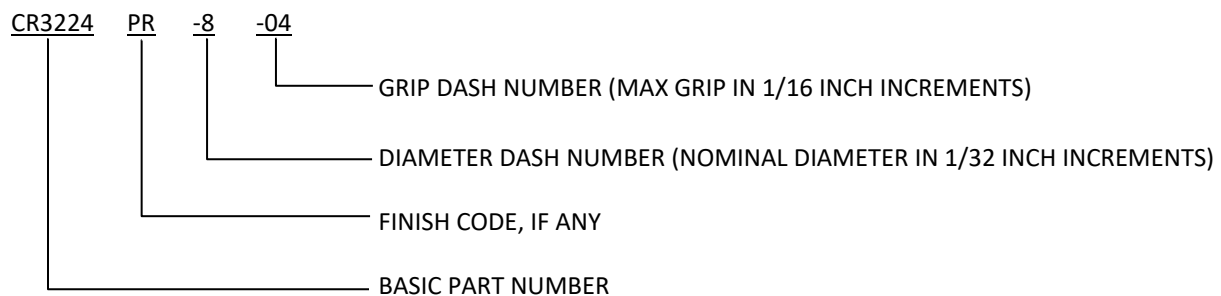
SHEET 3 OF 4			PART NUMBER
ISSUE	03-31-83		CR3224
REV.	AE	31 JAN 19	



NOTES:

- ① HEAD MARKINGS AND LOCK COLLAR VISIBLE AFTER INSTALLATION.
- ② GOLD COLORED DRIVING ANVIL IDENTIFIES NOMINAL DIAMETER RIVETS.
- ③ MINIMUM BLIND SIDE CLEARANCE FOR SATISFACTORY INSTALLATION. INSPECTION OF THIS FEATURE IS NOT PERFORMED BY THE MANUFACTURER.
- ④ MINIMUM GRIP FOR -02 GRIP PARTS: FOR -4 DIA. IS .063; FOR -5 IS .065; AND FOR -6 IS .080.
- ⑤ MATERIAL DESIGNATION REFERS TO CHEMICAL COMPOSITION ONLY.
- 6. SHEET THICKNESS FOR MACHINE COUNTERSUNK HOLES SHALL NOT BE LESS THAN "B" +.010.
- ⑦ SINGLE DIGIT HEAD MARKING IS PERMISSIBLE, AT MANUFACTURER'S OPTION, FOR GRIP DASH NUMBERS LESS THAN 10.
- ⑧ "PR" CODE – PARTS ARE MANUFACTURED BARE; IF LUBE IS REQUIRED, USE PAR 90 ONLY. IN ADDITION, MANUFACTURER'S OPTION TO APPLY MOLYBDENUM DISULFIDE TYPE I PER AS5272 TO STEM ONLY.
- ⑨ NICKEL PLATED (SILVER COLORED) DRIVING ANVILS ARE PROVIDED ON "DL" FINISH CODE PARTS. LUBRICANTS OTHER THAN DICRONITE DL-5 MAY NOT BE USED. "DL" FINISH MEETS SPECIFICATION DOD-L-85645.
- ⑩ FINISH CODES WITH THE PREFIX "G" INDICATE REACH COMPLIANT COATING.

EXAMPLE OF CHERRY PART NUMBER:



SHEET 4 OF 4		PART NUMBER
ISSUE	03-31-83	
REV.	AE	31 JAN 19
CR3224		

STANDARDS PAGE REVISION LOG

REV LTR	DATE	DCR NUMBER	REVISION DESCRIPTION	COMP. BY
AE	31 JAN 19	19-0052	<ul style="list-style-type: none">• SHEET 1 – ADDED NOTE ③ TO BK MIN• SHEET 2 – ADDITIONAL COMMENT ADDED TO NOTE ③	AA