



PRINTED COPIES OF THIS DOCUMENT ARE FOR "REFERENCE" ONLY. CURRENT REVISIONS ARE AVAILABLE ONLINE.

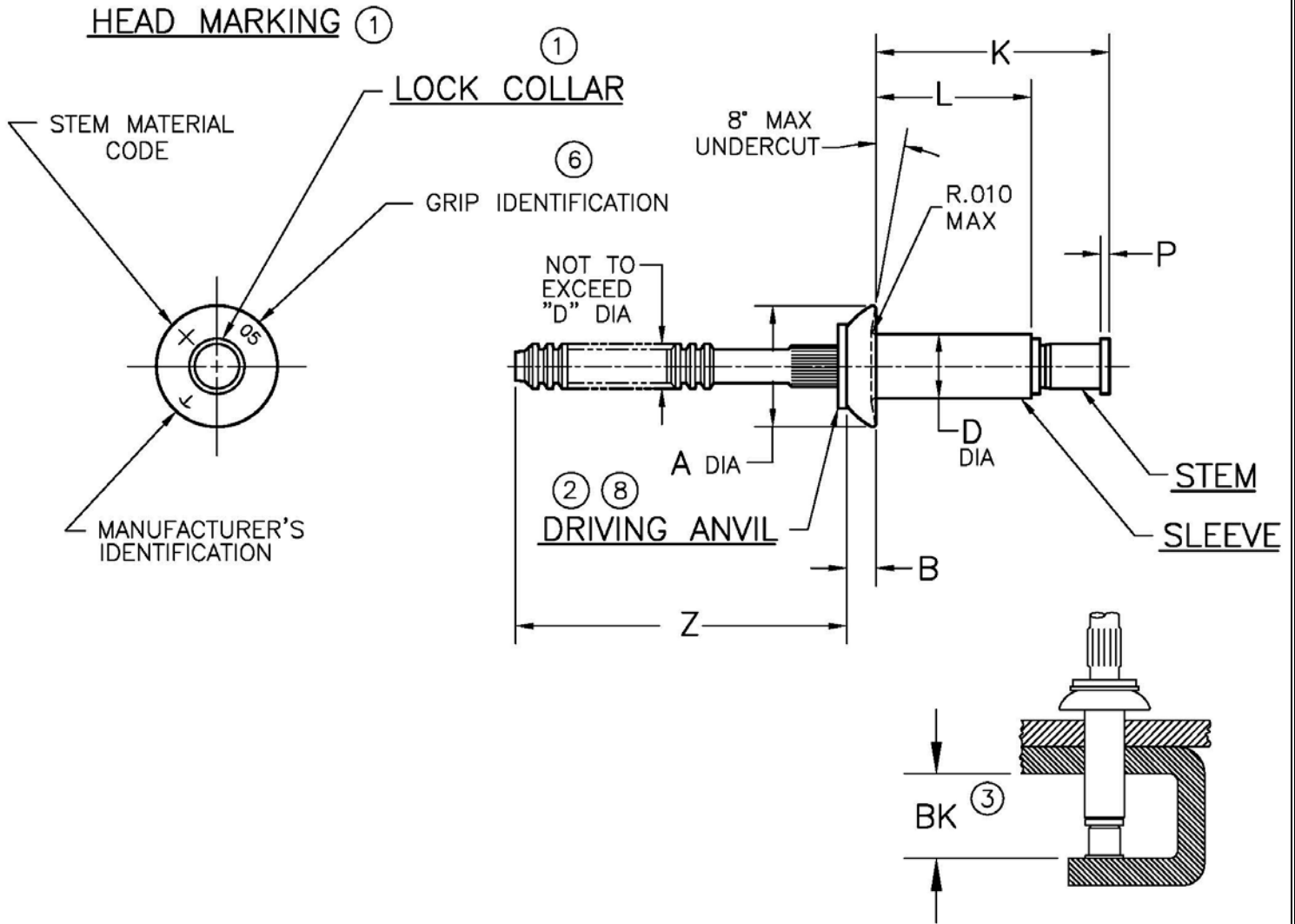


TABLE I

| DIA.<br>DASH<br>NO. | A<br>±.010 | B<br>+.010<br>-.000 | D<br>+.003<br>-.001 | P<br>MIN | Z<br>REF | BK③<br>MIN | HOLE LIMITS |      |
|---------------------|------------|---------------------|---------------------|----------|----------|------------|-------------|------|
|                     |            |                     |                     |          |          |            | MIN         | MAX  |
| -4                  | .250       | .054                | .126                | .010     | .87      | .355       | .129        | .132 |
| -5                  | .312       | .067                | .157                | .015     | .94      | .370       | .160        | .164 |
| -6                  | .375       | .080                | .189                |          |          | .415       | .192        | .196 |
| -8                  | .500       | .107                | .253                |          |          | .485       | .256        | .261 |

NOTICE: ALL DIMENSIONS ARE IN INCHES AND APPLY AFTER FINISH AND BEFORE LUBRICATION UNLESS OTHERWISE SPECIFIED.

WARNING: FASTENERS MAY NOT PERFORM PROPERLY IF ALTERED FROM THE MANUFACTURER'S AS-SHIPPED CONDITION OR INSTALLED IN CONDITIONS OTHER THAN SPECIFIED HEREIN.

|   |   |              |          |             |               |
|---|---|--------------|----------|-------------|---------------|
| PROCUREMENT SPECIFICATION:<br><br>PS-CMR-3000<br><br>NAS 523 CODE: SEE TABLE II | <b>CHERRYMAX® RIVET</b><br>NOMINAL DIAMETER<br>UNIVERSAL HEAD | SHEET 1 OF 4 |          | PART NUMBER |               |
|   |   | ISSUE        | 02-16-82 |             | <b>CR3223</b> |
|   |   | REV.         | AJ       | 31 JAN 19   |               |



TABLE II

| FINISH CODE | NAS 523 CODE | MATERIAL ⑤                |                              |  | FINISH   |   |                           |
|-------------|--------------|---------------------------|------------------------------|--|--|---|---------------------------|
|             |              | SLEEVE                    | STEM                         | LOCK COLLAR                              | SLEEVE   | STEM  | LOCK COLLAR               |
| ---         | AYE          | 5056 ALUM PER<br>QQ-A-430 | 15-7 PH CRES<br>PER AMS 5657 | A-286 CRES PER<br>AMS 5731 &<br>AMS 5737 | CHEM. FILM<br>PLAIN COLOR<br>PER<br>MIL-DTL-5541                   | PASSIVATE PER<br>AMS 2700                             | PASSIVATE PER<br>AMS 2700 |
| CF          | ---          |                           |                              |  |  | PASSIVATE PER<br>AMS 2700 &<br>DICRONITE DL-5         |                           |
| DL<br>⑧     | ---          |                           |                              |  |  | PASSIVATE PER<br>AMS 2700                             |                           |
| PR<br>⑦     | ---          |                           |                              |  |  | TUNGSTEN<br>DISULFIDE OR<br>PASSIVATE PER<br>AMS 2700 |                           |
| TD          | ---          |                           |                              |  |  |   |                           |
| V           | ---          |                           |                              |  | ANODIZE LIGHT<br>GREEN PER<br>MIL-A-8625                           | CAD. PLATE PER<br>QQ-P-416<br>TYPE I, CL 2            |                           |
| G<br>⑨      | ---          |                           |                              |  | CHEM. FILM<br>PLAIN COLOR<br>PER<br>MIL-DTL-5541<br>CL 1A, TYPE II | PASSIVATE PER<br>AMS 2700                             |                           |
| GCF<br>⑨    | ---          |                           |                              |  |  | PASSIVATE PER<br>AMS 2700 &<br>DICRONITE DL-5         |                           |
| GDL<br>⑧⑨   | ---          |                           |                              |  |  | PASSIVATE PER<br>AMS 2700                             |                           |
| GPR<br>⑦⑨   | ---          |                           |                              |  |  | TUNGSTEN<br>DISULFIDE OR<br>PASSIVATE PER<br>AMS 2700 |                           |
| GTD<br>⑧⑨   | ---          |                           |                              |  |  |   |                           |

|               |          |             |
|---------------|----------|-------------|
| SHEET 2 OF 4  |          | PART NUMBER |
| ISSUE         | 02-16-82 |             |
| REV.          | AJ       | 31 JAN 19   |
| <b>CR3223</b> |          |             |



TABLE III

| GRIP<br>DASH<br>NO. | GRIP RANGE |      | -4 DIA              |          | -5 DIA              |          | -6 DIA              |          | -8 DIA              |          |
|---------------------|------------|------|---------------------|----------|---------------------|----------|---------------------|----------|---------------------|----------|
|                     | MIN        | MAX  | L<br>+.000<br>-.030 | K<br>MAX | L<br>+.000<br>-.030 | K<br>MAX | L<br>+.000<br>-.030 | K<br>MAX | L<br>+.000<br>-.030 | K<br>MAX |
| -01                 | ④          | .062 | .161                | .38      | .187                | .41      | .219                | .47      | ---                 | ---      |
| -02                 | .063       | .125 | .224                | .45      | .230                | .47      | .262                | .51      | .313                | .59      |
| -03                 | .126       | .187 | .287                | .51      | .293                | .53      | .325                | .57      | .378                | .65      |
| -04                 | .188       | .250 | .349                | .57      | .355                | .59      | .387                | .64      | .440                | .72      |
| -05                 | .251       | .312 | .412                | .63      | .418                | .65      | .450                | .70      | .503                | .78      |
| -06                 | .313       | .375 | .474                | .70      | .480                | .72      | .512                | .76      | .565                | .84      |
| -07                 | .376       | .437 | .537                | .76      | .543                | .77      | .575                | .82      | .628                | .90      |
| -08                 | .438       | .500 | .599                | .82      | .605                | .84      | .637                | .88      | .690                | .97      |
| -09                 | .501       | .562 | .662                | .88      | .668                | .90      | .700                | .95      | .753                | 1.03     |
| -10                 | .563       | .625 | ---                 | ---      | .730                | .96      | .762                | 1.01     | .815                | 1.09     |
| -11                 | .626       | .687 | ---                 | ---      | .793                | 1.02     | .825                | 1.07     | .878                | 1.15     |
| -12                 | .688       | .750 | ---                 | ---      | ---                 | ---      | .887                | 1.13     | .940                | 1.22     |
| -13                 | .751       | .812 | ---                 | ---      | ---                 | ---      | ---                 | ---      | 1.003               | 1.28     |
| -14                 | .813       | .875 | ---                 | ---      | ---                 | ---      | ---                 | ---      | 1.065               | 1.34     |

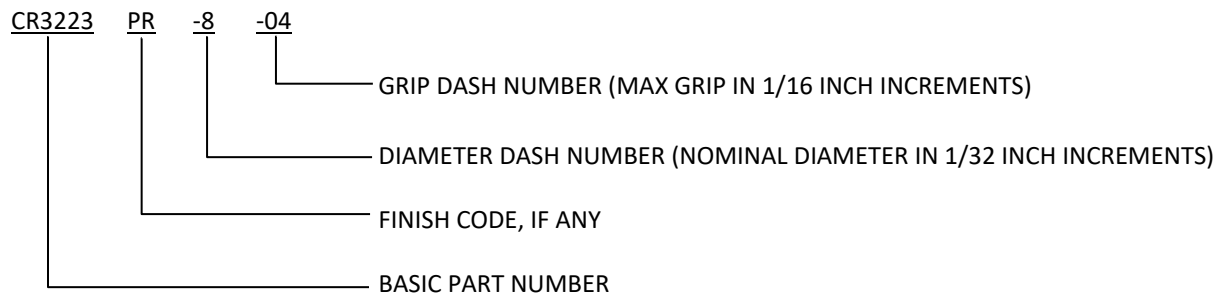
|              |          |           |             |
|--------------|----------|-----------|-------------|
| SHEET 3 OF 4 |          |           | PART NUMBER |
| ISSUE        | 02-16-82 |           | CR3223      |
| REV.         | AJ       | 31 JAN 19 |             |



## NOTES:

- ① HEAD MARKINGS AND LOCK COLLAR VISIBLE AFTER INSTALLATION.
- ② GOLD COLORED DRIVING ANVIL IDENTIFIES NOMINAL DIAMETER RIVETS.
- ③ MINIMUM BLIND SIDE CLEARANCE FOR SATISFACTORY INSTALLATION. INSPECTION OF THIS FEATURE IS NOT PERFORMED BY THE MANUFACTURER.
- ④ MINIMUM GRIP FOR -4 DIA. IS .025; FOR -5 IS .031; AND FOR -6 IS .037.
- ⑤ MATERIAL DESIGNATION REFERS TO CHEMICAL COMPOSITION ONLY.
- ⑥ SINGLE DIGIT HEAD MARKING IS PERMISSIBLE, AT MANUFACTURER'S OPTION, FOR GRIP DASH NUMBERS LESS THAN 10.
- ⑦ "PR" CODE – PARTS ARE MANUFACTURED BARE; IF LUBE IS REQUIRED, USE PAR 90 ONLY. IN ADDITION, MANUFACTURER'S OPTION TO APPLY MOLYBDENUM DISULFIDE TYPE I PER AS5272 TO STEM ONLY.
- ⑧ NICKEL PLATED (SILVER COLORED) DRIVING ANVILS ARE PROVIDED ON "DL" FINISH CODE PARTS. LUBRICANTS OTHER THAN DICRONITE DL-5 MAY NOT BE USED. "DL" FINISH MEETS SPECIFICATION DOD-L-85645.
- ⑨ FINISH CODES WITH THE PREFIX "G" INDICATE REACH COMPLIANT COATING.

## EXAMPLE OF CHERRY PART NUMBER:



|              |              |             |
|--------------|--------------|-------------|
| SHEET 4 OF 4 |              | PART NUMBER |
| ISSUE        | 02-16-82     | CR3223      |
| REV.         | AJ 31 JAN 19 |             |

## STANDARDS PAGE REVISION LOG

| REV LTR | DATE      | DCR NUMBER | REVISION DESCRIPTION  | COMP. BY |
|---------|-----------|------------|---|----------|
| AJ      | 31 JAN 19 | 19-0052    | <ul style="list-style-type: none"><li>• SHEET 1 – ADDED NOTE ③ TO BK MIN</li><li>• SHEET 2 – ADDITIONAL COMMENT ADDED TO NOTE ③</li></ul> | AA       |