

CHERRY® RIVETLESS NUTPLATE CNP53¹ FOR COMPOSITES

FEATURES AND BENEFITS

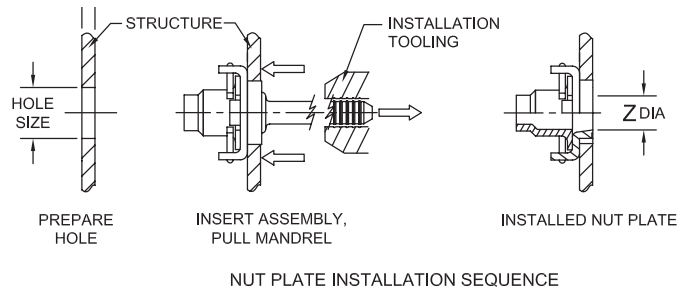
- Lightweight, compact design
- Extended grip range
- Shank design prevents de-lamination damage
- Installation requires a single, as-drilled hole: no counterbore, countersink or chamfer needed
- No flaring required
- Meets or exceeds the requirements of NASM25027²
- Installs on inclined & curved surfaces
- Boeing approved
- Uses standard Cherry® tooling
- Floating nut design
- Fast, reliable installation with lower installed cost
- Reduced maintenance cost—quick nut element replacement



¹ Patent Pending

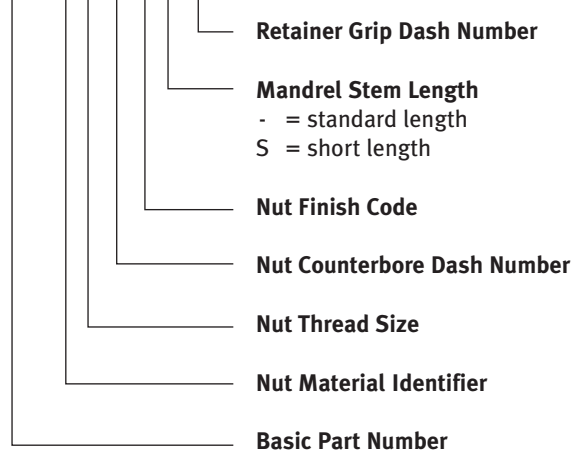
² 0.125" and longer grips

Fastener Diameter	Installation Tool	Adapter	Pulling Head
-3	G704B	N/A	H704-275NPC
	G750A	750A-088	H704-275NPC



CHERRY PART NUMBER EXAMPLE:

CNP53 C 3 -2 P - 04

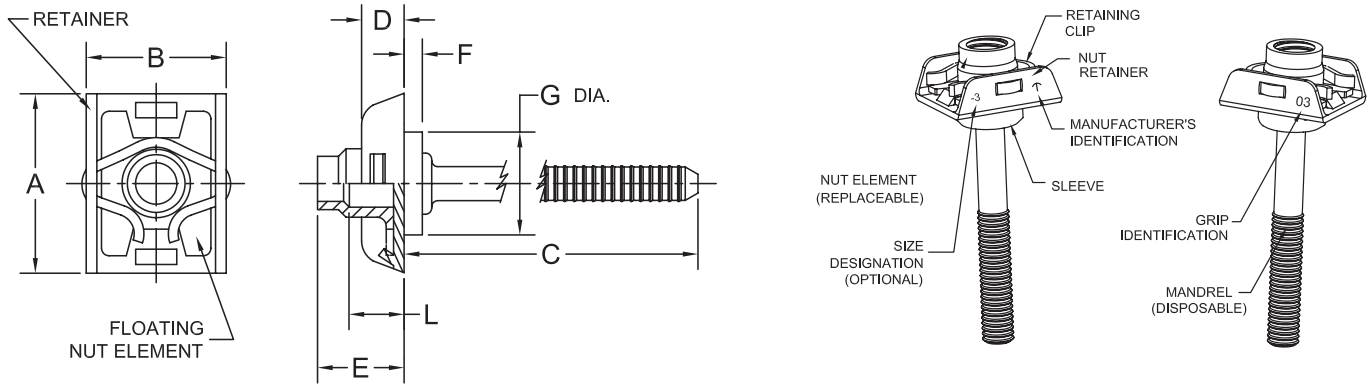


H704-275NPC
Straight Pulling Head
Patent Pending



CHERRY®
AEROSPACE
SPS Fastener Division, a PCC Company

CHERRY® RIVETLESS NUTPLATE CNP53 FOR COMPOSITES



NUT PLATE DIMENSIONS*

Fastener Diameter	Thread Size	C'Bore Dash No	L Min	A Max	B Max	C Ref	D Ref	E Max	Z Min	Hole Size	Retaining Clip
-3	.1900-32 UNJF-3B	-1	.076					.258		.275 .278	NAS 1795-3
		-2	.135	.595	.490	1.450	.245	.320	.218		
		-3	.198					.383			
		-4	.260					.446			
		-5	.323					.508			

NUT PLATE GRIP SELECTION

Grip Dash No.	Min Grip	F Ref	G Ref	Max Grip
-03	.125"	.110	.275	Based on customer application. Consult Cherry for options.

MECHANICAL PROPERTIES*

Diameter Designation	Thread Size	Axial Tensile Strength of Alloy Steel & CRES at Room Temperature	Assembly Mechanical Properties	
			Torque-Out (in-lbf, min)	Push-Out (lbf, Min)
-3	.1900-32 UNJF-3B	2460	60	100

CNP53 MATERIAL & FINISH*

Part	Material	Finish
Nut	A286 CRES per AMS5525, AMS5732 or AMS5737	Passivate per AMS 2700, copper or nickel strike optional and dry film lube per AS5272 Finish Code P – Silver plate per AMS2410, 0.0002" minimum thickness Finish Code PT – Silver plate per AMS2410, 0.0002" minimum thickness, threads only
Sleeve	Nickel 200 per ASTM-B162	None
Retainer	A286 CRES per AMS5525	Passivate per AMS 2700
Mandrel	A286 CRES per AMS5731 or 8740 Alloy Steel per AMS6322	Partially Copper Coated
Retaining Clip	XM-28 per ASTM-A-313	Passivate per AMS 2700

*Notes: See Standards Pages



CHERRY®
AEROSPACE
SPS Fastener Division, a PCC Company

1224 East Warner Avenue, Santa Ana, CA 92705
voice: 714-545-5511 • fax: 714-850-6093
www.cherryaerospace.com

©2008 Cherry Aerospace
Suppliers Federal ID Code 11815
Cherry® is a trademark of Cherry Aerospace ©2008
CA-1034, Date: August 19, 2008, CR 08-1126