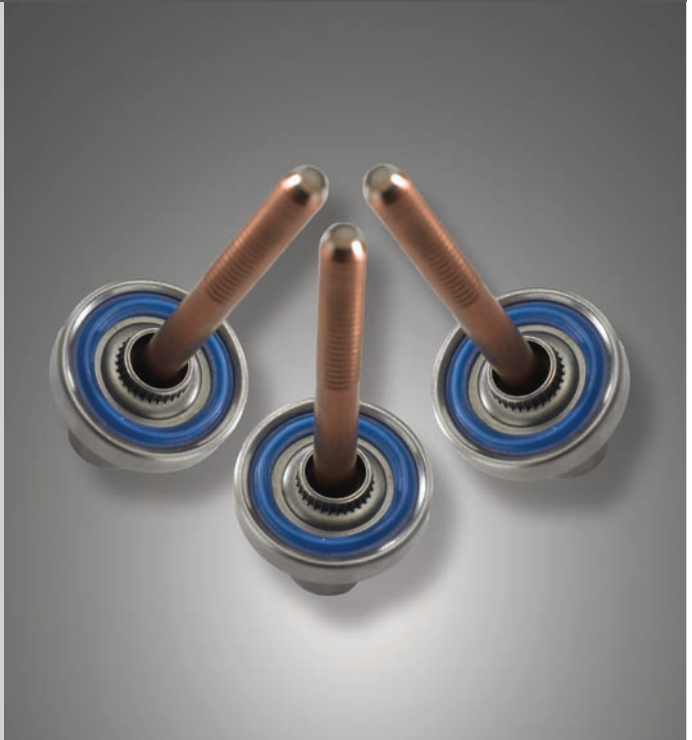


CHERRY® SEALING RIVETLESS NUTPLATE

FEATURES AND BENEFITS

- Lightweight, compact design
- Extended grip range
- Ideal for waterproofing, wet wing designs, fuel tanks, wet sealing applications
- Installation requires a single, as-drilled hole: no counterbore, countersink or chamfer needed
- No flaring required
- Meets or exceeds the requirements of NASM25027*
- Installs on inclined & curved surfaces
- Improves the fatigue life of aluminum structure compared to riveted nut plates
- Uses standard Cherry® tooling
- Floating nut design
- Fast, reliable installation with lower installed cost
- Reduced maintenance cost



*0.062" and longer grips

Fastener Diameter	Installation Tool	Adapter	Pulling Head**
-3	G704B	N/A	H704-249NP
	G750A	750A-088	H704-249NP

** See Tech Services for more options.



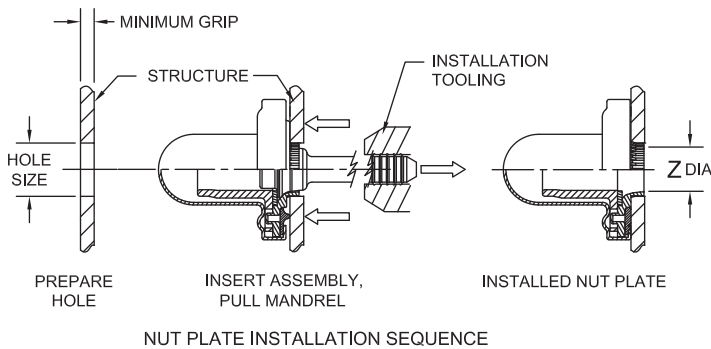
G704B



G750A



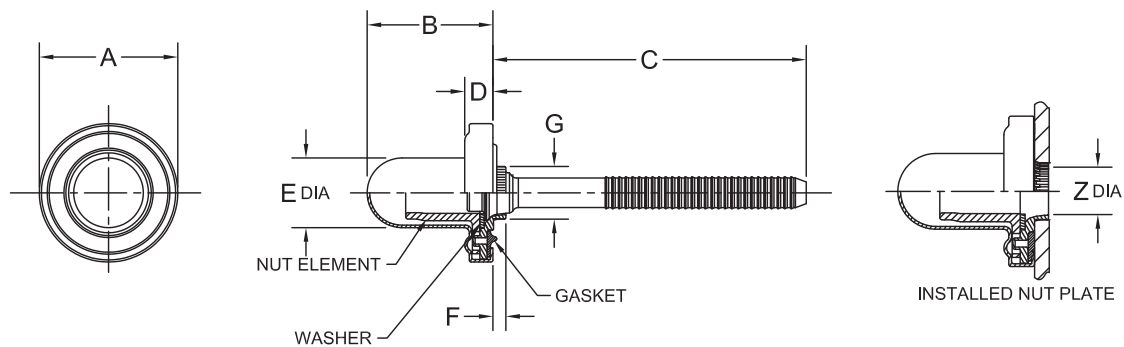
H704-249NP
Straight Pulling Head



CHERRY®
AEROSPACE
SPS Fastener Division, a PCC Company

1224 East Warner Avenue, Santa Ana, CA 92705
voice: 714-545-5511 • fax: 714-850-6093
www.cherryaerospace.com

CHERRY® SEALING RIVETLESS NUTPLATE



Nut Plate Dimensions

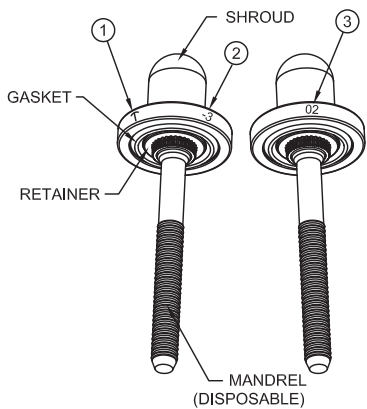
Fastener Diameter	A Max	B Max	C Ref	D Max	E Max	F Ref	G Ref	Z Ref	Hole Size
-3	.670	.650	1.400	.175	.330	.055	.250	.218	.249/.253

Mechanical Properties

Fastener Diameter & Grip		Nut Element		Assembly Mechanical Properties	
Diameter Designation	Grip	Thread Size	Axial Tensile Strength of Alloy Steel & CRES at Room Temperature	Torque-Out (in-lbf, min)	Push-Out (lbf, Min)
-3	-02	.1900-32 UNJF-3B	2825	60	100

CNP05 Material & Finish

Part	Material	Finish
Nut	A286 CRES per AMS5525, AMS5732 or AMS5737	Passivate per AMS 2700 and Dry Film Lube per NASM25027
Retainer	A286 CRES per AMS5525	Passivate per AMS 2700
Mandrel	A286 CRES per AMS5731	Partially Copper Coated
Shroud	304 CRES per ASTM-A-240	Passivate per AMS 2700
Gasket	Fluoro-Silicone Rubber per MIL-R-25988	None
Washer	Polyphthalamide (PPA) per ASTM-D-5336 Group 1, Class 1, Grade 1	None



Notes:

- ① Manufacturer's Identification Letter stamped on Shroud
- ② Fastener Size Designation stamped on Shroud
- ③ Grip Identification stamped on Shroud



CHERRY®
AEROSPACE
 SPS Fastener Division, a PCC Company

1224 East Warner Avenue, Santa Ana, CA 92705
 voice: 714-545-5511 • fax: 714-850-6093
 www.cherryaerospace.com

©2007 Cherry Aerospace
 Suppliers Federal ID Code 11815
 Cherry® is a trademark of Cherry Aerospace ©2007
 CA-1031 Rev. A, Date: Dec. 12, 2007, CR 07-1459