

CHERRY® G84-LS SPLIT POWER RIVETER

A NEW PRODUCTION RIVETER DESIGNED FOR HIGH SPEED AND RELIABLE OPERATION

FEATURES & BENEFITS

Ergonomic design with high pulling force

- Comfortable one-hand operation
- Can be configured for straight (in-line) or pistol grip operation
- Lightweight head assembly weighs only 3.0 pounds
- Compact head design delivers large pulling force in difficult access areas
- Recoil absorbing design reduces shocks transmitted to the user

Proven tool design

- The G84-LS is a “split” version of the proven Cherry® G84
- Capable of installing the most popular sizes of aircraft lockbolts, blind bolts and rivets
- Pulling force of 5,700 pounds
- Compatible with all Cherry® pulling heads; adaptor kits sold separately
- The low maintenance tool incorporates the traditional simplicity, durability, and reliability of all Cherry® brand tools



INSTALLATION CAPABILITIES

Installs a wide range of aerospace fasteners* including:

- Lockbolts – all sizes up to 1/4"
- Blindbolt – all sizes up to 1/4"
- CherryMAX® – all sized up to 1/4"
- Cherry® Rivetless Nut Plate – all sizes

G84-LS PULLING HEADS*

Pulling heads for the G84-LS or comparable riveters will fit directly with no adaptation required. For other Cherry mount systems, the following adaptors are required:

Adapter*	To Adapt to Tool Mounting System
744-500	Cherry G744 mount
744-600	Cherry G704B/747/746A
744-700	Cherry G83/84 Bayonet

*May require adaptor. Pulling Heads and adaptors are not furnished with riveter and must be ordered separately.

CHERRY® G84-LS SPLIT POWER RIVETER

A NEW PRODUCTION RIVETER DESIGNED FOR HIGH SPEED AND RELIABLE OPERATION

SPECIFICATIONS

Weight

Operator Unit 3.0 lbs (1,3 kg)

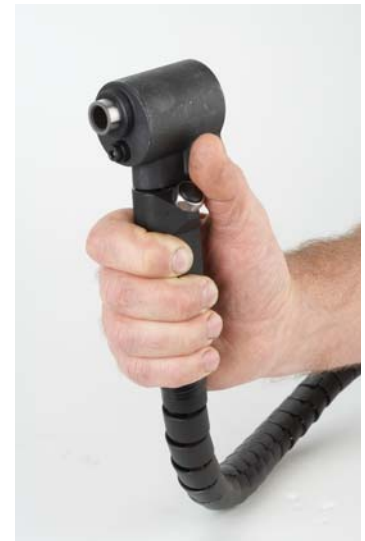
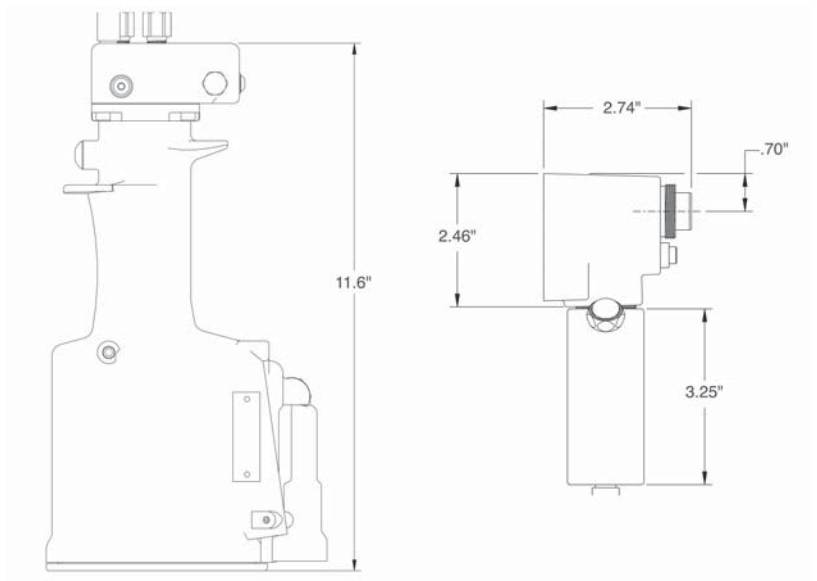
Total Weight 11.8 lbs (5,35 kg)

Pulling Force 5700 lbs min @ 110 psi
(25,32 kN @ 6,9 bar)

Piston Stroke 0.53 in (13,5 mm)

Air Pressure 90 to 110 psi
(6,2 bar to 7,6 bar)

NOTE: Pulling heads and adaptor kits are not furnished with riveter and must be ordered separately



CHERRY®
AEROSPACE

SPS Fastener Division, a PCC Company

1224 East Warner Avenue, Santa Ana, CA 92705
voice: 714-545-5511 • fax: 714-850-6093
www.cherryaerospace.com

©2007 Cherry Aerospace
Suppliers Federal ID Code 11815
Cherry® and CherryMAX®,
are trademarks of Cherry Aerospace.
CA-1022 Rev. A, Date: 03-19-07 CR# 07-0348