

CHERRY® BLIND TACKING RIVET SYSTEM*

FEATURES AND BENEFITS

The Cherry® Blind Tacking Rivet System provides simple blind rivet installation and trouble free removal.

The Cherry® CCR284 is designed to improve drill-out by using external splines on the rivet shank to prevent rotation. The Cherry® Blind Tacking Rivet System is available with a 5056 aluminum sleeve and a C-1018 steel stem. Sleeve finishes include clear, red or black anodize.

- Simple Installation
- Low Cost
- Anti Rotation Design (Easy Removal)
- Red, Black or Clear Finish
- Wide Variety of Diameters & Grips



*Patent No. 6,746,192

Installation Tool	Adapter	Pulling Head	Fastener Diameter			
			3/32"	1/8"	5/32"	3/16"
G29	N/A	Included				
G750A	750-117	H9015 Series				
G702A	N/A	H702-3NPR				
G746A/G704B/G747	704A9	H9015 Series				
G746A/G704B/G747	N/A	H902-3NPR				
G746A/G704B/G747	N/A	H902-4NPR				
GH780	N/A	Included for 6 dia.				



G702A

G747



G750A

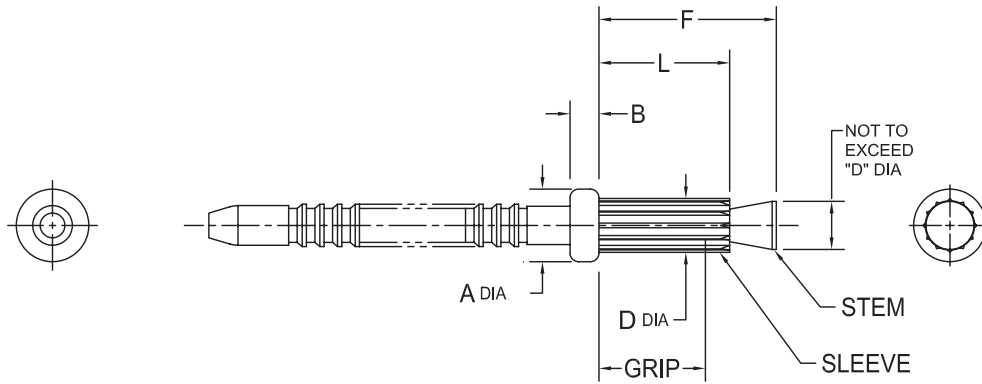


H702-3NPR
Straight Pulling Head
(-4 dia. nose tip included)



CHERRY®
AEROSPACE
SPS Fastener Division, a PCC Company

CHERRY® BLIND TACKING RIVET SYSTEM



Dia Dash No.	A ±005	B +010 -000	D ①	Hole Size	
				Max	Min
-3	.125	.035	.097 .091	.101	.097
-4	.155	.040	.129 .122	.132	.129
-5	.187	.050	.160 .153	.164	.160
-6	.218	.065	.192 .184	.196	.192

Grip Dash No.	Grip Range	-3 Dia		-4 Dia		-5 Dia		-6 Dia	
		F Max	L ±010	F Max	L ±010	F Max	L ±010	F Max	L ±010
-02	.063-125	.283	.193	.312	.222	.352	.244	.377	.267
-04	.125-250	.407	.317	.437	.347	.477	.369	.502	.392
-06	.189-375	.532	.442	.562	.472	.601	.494	.627	.517
-08	.250-500	.657	.568	.693	.597	.727	.619	.752	.642
-10	.312-625	—	—	.818	.722	.852	.744	.877	.767
-12	.375-750	—	—	—	—	.977	.869	1.002	.892
-14	.437-875	—	—	—	—	—	—	1.127	1.017

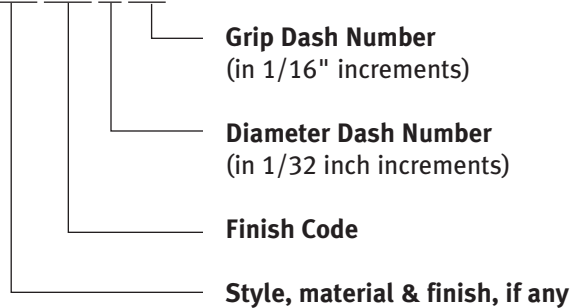
MATERIAL & FINISH

Part Number	Material		Finish	
	Sleeve	Stem	Sleeve	Stem
CCR284AS	5056 Aluminum	C-1018 Steel	None	Rust Preventive (Oil Base)
CCR284ASR	5056 Aluminum	C-1018 Steel	Red Anodize per Mil-A-8625	Rust Preventive (Oil Base)
CCR284ASB	5056 Aluminum	C-1018 Steel	Black Anodize per Mil-A-8625	Rust Preventive (Oil Base)

NUMBERING SYSTEM

Cherry Part Number Example:

CCR 284 ASR -3 -04



NOTES:
 ① "D" diameter is measured over splines.
 2. Not all splines are fully formed.



CHERRY®
AEROSPACE
 SPS Fastener Division, a PCC Company

1224 East Warner Avenue, Santa Ana, CA 92705
 voice: 714-545-5511 • fax: 714-850-6093
 www.cherryaerospace.com

©2008 Cherry Aerospace
 Suppliers Federal ID Code 11815
 Cherry® is a trademark of Cherry Aerospace ©2008
 CA-1033, Date: August 19, 2008, CR 08-0882